

D-Link[®]

One Connection - Infinite Possibilities

Product guide



SWITCHES | WIRELESS | INDUSTRIAL & M2M | 4G/5G | DIGITAL HOME

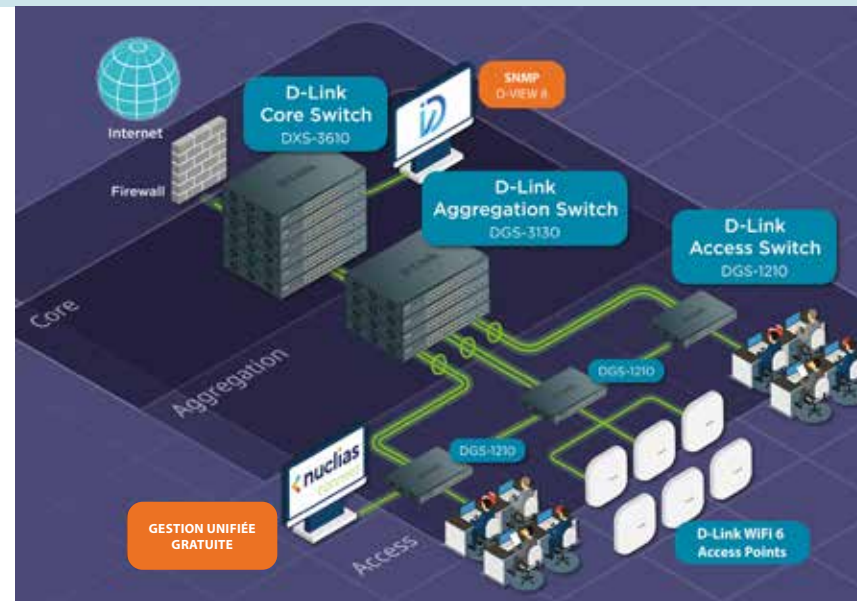
WHY D-LINK ?



D-Link, the preferred choice of millions of customers since 1986, is a Taiwanese manufacturer at the forefront of innovation. As the Internet and networking have evolved, we have continuously led the way in new technologies. Our cutting-edge products meet the needs of both businesses and individuals, providing reliable and high-performance solutions. Committed to the environment, we have developed Green Ethernet technology, demonstrating our dedication to a greener and more sustainable future.

D-Link stays ahead of technological trends thanks to its resources and expertise, offering a wide range of solutions that combine performance and reliability.

Our commitment goes beyond technological innovation; our true strength lies in our dedicated team. Close and local, our employees are passionately committed to pre-sales and after-sales support, ensuring exceptional customer service.



For Businesses

D-Link provides the scale, resources, and expertise that even the most demanding companies seek. We stay close to our customers and, thanks to our R&D, we quickly deliver advanced solutions.

Our switching, Wi-Fi, industrial Ethernet, M2M, and cloud network management solutions offer top-tier performance. We provide standardised, flexible, reliable, and secure technologies that are easy to implement and cost-effective.

For the Home

We live in a digital world where we want all our devices to communicate and integrate seamlessly, without human intervention. We want to stream music, ask Siri or Alexa for the weather, monitor our babies or pets, download HD movies, share photos, play games, and check our emails.

To achieve this, we need modern and advanced products. D-Link offers it all: Wi-Fi 6 routers, network cameras, smart plugs, Wi-Fi range extenders, and 5G hotspots. There is a D-Link product for every need.



Many of our business products come with a limited lifetime warranty, reflecting our commitment to delivering even greater quality, performance, and value.

CONTENT



SWITCHING

- Unmanaged Switches
- Smart-Managed Switches
- Managed and Stackable 10 GbE Switches
- Managed Top-of-Rack Switches (10, 25, 40, 100 GbE)
- Switches for Video Surveillance
- Network Management Software



WIRELESS / UNIFIED WIRELESS

- Wireless
- Nuclias Connect
- Nuclias Cloud
- Unified Wireless



INDUSTRIAL & M2M SOLUTIONS

- Industrial Switches
- M2M 4G & 5G Routers



mydlink

Indoor and Outdoor Wi-Fi Cameras with mydlink app for remote management.



SOLUTIONS FOR THE HOME

- EAGLE PRO AI and AQUILA PRO AI
- Mesh Wi-Fi Solutions
- Wi-Fi Extenders
- Wi-Fi Adapters and Cards
- Wi-Fi Routers



4G/5G

- 4G/5G Routers
- Portable Hotspots
- USB Adapters
- Outdoor 5G/LTE CPE

USB Docking Stations



Value in Partnership⁺

PARTNER PROGRAMME

- Online Training
- Sales Support Tools

SWITCHES



Switches from Core to Edge of the Network

Imagine this for a moment: a switch fails, and your business faces a range of issues, from loss of connectivity for certain users to a major network outage. To avoid these disruptions, trust D-Link's complete range of switches. Whether for the core of your network or its edge, D-Link offers solutions for all your needs: Gigabit, Multi-gigabit, 10 Gigabit, PoE or non-PoE switches. Our products range from plug-and-play models to fully manageable L3 solutions, specially designed for network cores and data centers. With D-Link, ensure reliable and high-performance connectivity, and say goodbye to interruptions!

For harsh environments, industrial switches are robust and can operate in extreme temperature and humidity conditions.

Why Choose Multi-Gigabit

Switching to a multi-gigabit network allows you to handle the pressure exerted by new applications like video conferencing or streaming, which demand higher bandwidth. It's also a way to anticipate future developments and ensure that the network will be ready to accommodate the increasing volume of data and enable the deployment of emerging technologies such as Wi-Fi 7 or artificial intelligence, which is becoming more widespread and requires a robust network infrastructure capable of supporting high data rates. Faster and more reliable networks improve operational efficiency and reduce maintenance or downtime costs.

Multi-Gigabit 2.5G/10G Unmanaged



		2.5G / 10G						
		DMS-105	DMS-107	DMS-108	DMS-108P	DMS-106XT	DMS-1016	DMS-1024
HARDWARE	MODEL	DMS-105	DMS-107	DMS-108	DMS-108P	DMS-106XT	DMS-1016	DMS-1024
	Number of 10/100/1000BASE-T ports		5					
	Number of 10/100/1000/2.5GBASE-T ports	5	2	8	8	5	16	24
	Number of 10/100/1000/2.5G/10GBASE-T ports					1		
	Switching capacity	25 Gbps	20 Gbps	40 Gbps	40 Gbps	45 Gbps	80 Gbps	120 Gbps
	PoE standards				802.3af/at/bt			
	PoE power budget				240 W			
	PoE capable ports				Ports 1-8, up to 90W			
	Desktop	*	*	*	*	*	*	*
	Wall-mountable	*	*	*	*			
	Rackmountable*						*	*
	Metal enclosure	*	*	*	*	*	*	*
	Fanless	*	*	*	*	*	*	*
	MAC address	4K	2K	4K	4K	4K	4K	4K
	Jumbo frame	9216 Bytes	9216 Bytes	9216 Bytes	9216 Bytes	9728 Bytes	9216 Bytes	9216 Bytes
	802.1p QoS	*	* (Gigabit port only)	*	*	*	*	*
	Number of QoS queues	8	8	8	8	8	8	8
	IGMP snooping	*		*	*	*	*	*
	Cable diagnostics					*	*	*
D-Link Green	*	*	*	*	*	*	*	
802.3az EEE	*	*	*	*	*	*	*	
Power supply type	External	External	External	External	External	Internal	Internal	

Unmanaged Fast Ethernet

Fast Ethernet



MODEL	DES-1005D	DES-105	DES-1005P	DES-1008D	DES-108	DES-1016D	DES-1024D
Number of Fast Ethernet ports	5	5	5	8	8	16	24
Switching capacity	1 Gbps	1 Gbps	1 Gbps	1.6 Gbps	1.6 Gbps	3.2 Gbps	4.8 Gbps
PoE standards			802.3af, 802.3at				
PoE power budget			60 W				
PoE capable ports			Port 1-4, up to 30 W				
Desktop	•	•	•	•	•	•	•
Rackmountable*						•	•
Metal enclosure		•	•		•	•	•
Fanless	•	•	•	•	•	•	•
MAC address	2K	2K	2K	1K	1K	8K	8K
Jumbo frame		2047 Bytes			1536 Bytes	2000 Bytes	
802.1p QoS		• (Strict mode)	• (Strict mode)		• (Strict mode)	2• (Strict mode)	• (Strict mode)
Number of QoS queues		2	4		2	4	4
D-Link Green	•	•	•	•	•	•	•
802.3az EEE	•	•	•	•	•	•	•
Power supply type	External	External	External	External	External	Internal	Internal

Unmanaged Gigabit

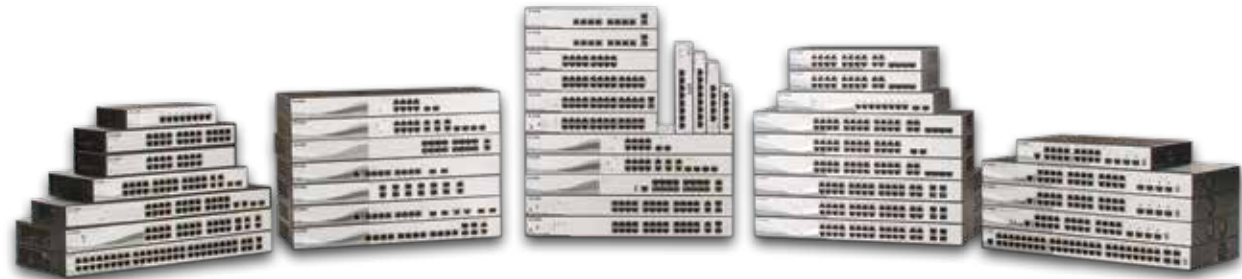
Gigabit Ethernet



MODEL	DGS-1005D	DGS-105	DGS-1005P	DGS-1008D	DGS-108	DGS-1008P	DGS-1008MP	DGS-1010MP	DGS-1016D	DGS-1018P	DGS-1024D	DGS-1026P	DGS-1026MP
Number of Gigabit ports	5	5	5	8	8	8	8	8 + 1	16	16	24	24	24
Number of Combo 1000BASE-T/SFP ports								1					2
Number of SFP ports										2		2	
Switching capacity	10 Gbps	10 Gbps	10 Gbps	16 Gbps	16 Gbps	16 Gbps	16 Gbps	20 Gbps	32 Gbps	36 Gbps	48 Gbps	52 Gbps	52 Gbps
PoE standards			802.3af, 802.3at			802.3af, 802.3at	802.3af, 802.3at	802.af, 802.at		802.3af, 802.3at		802.3af, 802.3at	802.3af, 802.3at
PoE power budget			60 W			68 W	125 W	125 W		240 W		240 W	370 W
PoE capable ports			Ports 1-4, up to 30 W			Ports 1-4, up to 30 W	Ports 1-8, up to 30 W	8		Ports 1-16, up to 30 W		Ports 1-24, up to 30 W	Ports 1-24, up to 30 W
DIP switch (EEE/Flow Control/Port Isolation and Storm Control)									•	• (Flow Control, Port Isolation and Storm Control, 250m PoE)		• (Flow Control, Port Isolation and Storm Control, 250m PoE)	
Desktop	•	•	•	•	•	•	•	•	•	•	•	•	•
Rackmountable*							•	•	•	•	•	•	•
Metal enclosure		•	•	•	•	•	•	•	•	•	•	•	•
Fanless	•	•	•	•	•	•	•	•	•	2 x smart fan	•	2 x smart fan	2 x smart fan
MAC address	8K	2K	2K	4K	8K	4K	8K	4K	8K	8K	8K	8K	8K
Jumbo frame	9720 Bytes	9216 Bytes	9216 Bytes	9720 Bytes	9216 Bytes	9720 Bytes	9216 Bytes		10,000 Bytes	9216 Bytes	10,000 Bytes	9216 Bytes	9600 Bytes
802.1p QoS	• (Strict mode)	• (Strict mode)	• (Strict mode)	• (Strict mode)	• (Strict mode)	• (Strict mode)	• (Strict mode)		•	•	•	•	•
Number of QoS queues	4	4	4	4	4	4	4		8		8		
IGMP snooping	•	•	•	•	•	•	•		•	•	•	•	•
Cable diagnostics	•	•	•	•	•	•	•		•	•	•	•	•
D-Link Green	•	•	•	•	•	•	•	•	•	•	•	•	•
802.3az EEE	•	•	•	•	•	•	•	•	•	•	•	•	•
Power supply type	External	External	External	External	External	External	Internal	Internal	Internal	Internal	Internal	Internal	Internal

* All our rack-mounted switches include the necessary kit for installation in a 19-inch rack.

SWITCHES



SMART-MANAGED SWITCHES

The smart choice.

Discover the most extensive and versatile range of Smart-Managed Switches. With models ranging from 8 to 52 ports, in Gigabit and Multi-gigabit, and uplinks of 10 Gigabit up to physical stacking, our Smart switches are designed to meet all your needs. Take advantage of advanced network management features to enhance security (VLAN segmentation, access control lists) and optimise performance (static routing, link aggregation, etc.). Trust our solutions for reliable and high-performance connectivity!

They can be managed via the Web interface, CLI commands, or through our Nuclias Connect* or Nuclias Cloud* platform for complete network management.

*depending on the model

PoE Ports

Power over Ethernet (PoE) technology uses the LAN cable to power and transmit data to connected PoE devices. Whether you're deploying an IP camera network, Wi-Fi access points, or IP phones, PoE ports simplify installation and reduce deployment costs. PoE ports are a smart investment as they save on electrical installation and additional labor costs.

Multigigabit/10 Gigabit

Our 10 Gigabit Smart Switches offer a budget-friendly solution for managing the increasingly necessary migration to 10 Gigabit networks. Whether it's native models with copper RJ-45 ports or hybrid solutions with Gigabit ports and SFP+ ports for 10G uplinks, we have the perfect range to meet all your projects. Models range from basic Easy Smart management to Managed L3 management, allowing you to design a 10 Gigabit network architecture from the core to the uplinks.

Layer 3 Management

Layer 3 support with static routing is often reserved for SNMP switches, but at D-Link, we integrate it into our range of DGS-1210 smart switches to enhance network performance and reduce the load on routers and the network backbone. The network can also be optimised with Spanning Tree to improve redundancy and prevent loops, or with Link Aggregation (LACP) to boost performance.

Stacking

Physical stacking allows multiple switches to be treated as a single switch for configuration and management purposes (the stack shares the same main IP address), making it an ideal solution for deploying uplinks or network cores. The benefits of stacking go beyond simplified management, as it also provides redundancy in case of a link or unit failure, as well as enhanced performance by separating internal stack traffic from network traffic.



Physical stacking



sFlow



ERPS



ACLs



IEEE 802.1Q VLAN



Loopback Detection



Static Route



IGMP Snooping

Smart Gigabit

Gigabit Ethernet



	MODEL	DGS-1100-05V2	DGS-1100-08V2	DGS-1100-08PV2	DGS-1100-10MPV2	DGS-1100-16V2	DGS-1100-18PV2	DGS-1100-24V2	DGS-1100-24PV2	DGS-1100-26MPV2	
HARDWARE	Number of 10/100/1000BASE-T ports	5	8	8	8	16	16	24	24	24	
	Number of Combo 10/100/1000BASE-T/SFP ports						2			2	
	Number of 100/1000 Mbps SFP ports				2						
	Switching capacity	10 Gbps	16 Gbps	16 Gbps	20 Gbps	32 Gbps			48 Gbps	48 Gbps	52 Gbps
	PoE standards			802.3af, 802.3at	802.3af, 802.3at			36 Gbps		802.3af, 802.3at	802.3af, 802.3at
	Powered by PoE						802.3af - 802.3at				
	PoE power budget			64 W	130 W				100 W		370 W
	PoE capable ports			Port 1-8, up to 30W	Port 1-8, up to 30 W		130W		Port 1-12, up to 30 W		Port 1-24, up to 30 W
	Fanless	•	•	•		•	16	•	•	•	•
	D-Link Green	•	•	•	•	•	1 x fan	•	•	•	•
802.3az EEE	•	•	•	•	•	Yes	•	•	•	•	
Power supply type	External	External	External	Internal	Internal	Yes	Internal	Internal	Internal	Internal	
L2	MAC address	2K	4K	4K	8K	8K	Internal	8K	8K	8K	
	802.1D STP, 802.1w RSTP, 802.1s MSTP						8190				
	802.3ad, 802.1AX link aggregation	Static trunk	Static trunk	Static trunk	•	•	STP - RSTP	•	•	802.3ad	
VLAN	VLAN group (max static)	32	32	32	128	128	Yes	128	128	128	
	Port / MAC / protocol-based VLAN, GVRP	Port	Port	Port	Port	Port	128	Port	Port	Port	
	Asymmetric VLAN	•	•	•	•	•	Port-based VLAN	•	•	•	
	Auto Voice/Surveillance VLAN	•	•	•	•	•	Yes	•	•	•	
L3	IPv4/IPv6 routing table						Yes				
	IP interfaces										
	IPv6 support										
	Routing table size										
QoS	Static route for IPv4/IPv6										
	Number of queues per port	4	4	4	8	8		8	8	4	
	CoS based on contents						8				
ACL	Bandwidth control (min. granularity)	• (8 Kbps)	• (8 Kbps)	• (8 Kbps)	• (16 Kbps)	• (16 Kbps)	Yes	• (16 Kbps)	• (16 Kbps)	• (8 Kbps)	
	ACL (Ingress / Egress / VLAN-based)						16 Kbps				
SECURITY	Based on packet contents										
	SSH, SSL (v1/v2/v3)										
	Smart Binding						SSL				
	Loopback Detection	•	•	•	•	•		•	•	•	
AAA	ARP spoofing						Yes				
	802.1X access control										
	RADIUS server support										
MANAGEMENT	SNMP (v1/v2c/v3), RMON v1										
	LLDP-MED						SNMP v1/v2c				
	ICMPv6										
	Nuclias Connect				•	•	•	•	•	•	

SWITCHES

Smart Gigabit

Gigabit Ethernet



		DGS-1210-08P	DGS-1210-10	DGS-1210-10P	DGS-1210-10MP	DGS-1210-24P	DGS-1210-20	DGS-1210-16
HARDWARE	MODEL	DGS-1210-08P	DGS-1210-10	DGS-1210-10P	DGS-1210-10MP	DGS-1210-24P	DGS-1210-20	DGS-1210-16
	Number of 10/100BASE-TX ports							
	Number of 10/100/1000BASE-T ports	8	8	8	8	24	16	16
	Number of Combo 10/100/1000BASE-T/SFP ports					4	4	4
	Number of 100/1000 Mbps SFP ports	2	2	2	2			
	Switching capacity	20 Gbps	20 Gbps	20 Gbps	20 Gbps	56 Gbps	40 Gbps	40 Gbps
	PoE standards	802.3af, 802.3at		802.3af, 802.3at	802.3af, 802.3at	802.3af, 802.3at		
	PoE power budget	65 W		65 W	130 W	193 W		
	PoE capable ports	Ports 1-8, up to 30 W		Ports 1-8, up to 30 W	Ports 1-8, up to 30 W	Ports 1-24, up to 30W		
	Perpetual PoE			*	*			
	Fanless	*	*	*	*		*	*
	D-Link Green	*	*	*	*	*	*	*
	802.3az EEE	*	*	*	*	*	*	*
Power supply type	External	Internal	External	Internal	Internal	Internal	Internal	
L2	MAC address	8K	8K	8K	8K	8K	8K	8K
	802.1D STP, 802.1w RSTP, 802.1s MSTP	802.1D, 802.1w	*	*	*	802.1D, 802.1w	*	802.1D, 802.1w
	802.3ad, 802.1AX link aggregation	*	*	*	*	*	*	*
VLAN	VLAN group (max static)	256	256	256	256	256	256	256
	Port / MAC / protocol-based VLAN, GVRP	Port	Port	Port	Port	Port	Port	Port
	Asymmetric VLAN	*	*	*	*	*	*	*
	Auto Voice/Surveillance VLAN	*	*	*	*	*	*	*
L3	IP interfaces		4	4	4		4	
	IPv6 support		*	*	*		*	
	Static route for IPv4/IPv6		124/50	124/50	124/50		124/50	
QoS	Number of queues per port	8	8	8	8	8	8	8
	CoS based on contents	*	*	*	*	*	*	*
	Bandwidth control (min. granularity)	• (16 Kbps)	• (16 Kbps)	• (16 Kbps)	• (16 Kbps)	• (16 Kbps)	• (16 Kbps)	• (16 Kbps)
SURVEILLANCE MODE	Video Surveillance Mode	*	*	*	*	*	*	*
	ONVIF Device Discovery	*	*	*	*	*	*	*
	Video Surveillance Topology	*	*	*	*	*	*	*
	Video Surveillance Device Information	*	*	*	*	*	*	*
ACL	ACL (Ingress / Egress / VLAN-based ACL)	• (Ingress)	• (Ingress)	• (Ingress)	• (Ingress)	• (Ingress)	• (Ingress)	• (Ingress)
	Based on packet contents	*	*	*	*	*	*	*
SECURITY	SSH, SSL (v1/v2/v3)	*	*	*	*	*	*	*
	IP-MAC-port binding (IMPB)	*	*	*	*	*	*	*
	ARP spoofing	*	*	*	*	*	*	*
AAA	802.1X access control	*	*	*	*	*	*	*
	RADIUS	*	*	*	*	*	*	*
MANAGEMENT	Dual image	*	*	*	*	*	*	*
	SNMP (v1/v2c/v3), RMON v1	*	*	*	*	*	*	*
	LLDP-MED	*	*	*	*	*	*	*
	ICMPv6	*	*	*	*	*	*	*
	Command Line Interface (CLI)		Compact	Compact	Compact		Compact	
	Nuclias Connect	*	*	*	*	*	*	

Smart Gigabit with 10G uplinks



		Gigabit Ethernet						Gigabit Ethernet with 10G Uplink			
MODEL		DGS-1210-26	DGS-1210-28	DGS-1210-28P	DGS-1210-28MP	DGS-1210-52	DGS-1210-52MP	DGS-1250-28X	DGS-1250-28XMP	DGS-1250-52X	DGS-1250-52XMP
HARDWARE	Number of 10/100/1000BASE-T ports	24	24	24	24	48	48	24	24	48	48
	Number of Combo 10/100/1000BASE-T/SFP ports		4	4	4	4	4				
	Number of 100/1000 Mbps SFP ports	2									
	Number of 10G SFP+ ports							4	4	4	4
	Switching capacity	52 Gbps	56 Gbps	56 Gbps	56 Gbps	104 Gbps	104 Gbps	128 Gbps	128 Gbps	176 Gbps	176 Gbps
	PoE standards			802.3af, 802.3at	802.3af, 802.3at		802.3af, 802.3at		802.3af, 802.3at		802.3af, 802.3at
	PoE power budget			193 W	370 W		370 W		370 W		370 W
	PoE capable ports			Ports 1-24, up to 30 W	Ports 1-24, up to 30 W		Ports 1-48, up to 30 W		Port 1-24, up to 30 W		Port 1-48, up to 30 W
	Perpetual PoE			•	•		•				•
	Fanless	•	•								
	Smart fan			•	•	•	•	•	•	•	•
	D-Link Green	•	•	•	•	•	•	•	•	•	•
802.3az EEE	•	•	•	•	•	•	•	•	•	•	
Power supply type	Internal	Internal	Internal	Internal	Internal	Internal	Internal	Internal	Internal	Internal	
L2	MAC address	8K	8K	8K	8K	16K	16K	16K	16K	32K	32K
	802.1D STP, 802.1w RSTP, 802.1s MSTP	•	•	•	•	•	•	•	•	•	•
	802.3ad, 802.1AX link aggregation	•	•	•	•	•	•	• (802.3ad only)	• (802.3ad only)	• (802.3ad only)	• (802.3ad only)
VLAN	VLAN group (max static)	256	256	256	256	256	256	4K	4K	4K	4K
	Port / MAC / protocol-based VLAN, GVRP	Port	Port	Port	Port	Port	Port	Port	Port	Port	Port
	Asymmetric VLAN	•	•	•	•	•	•	•	•	•	•
	Auto Voice/Surveillance VLAN	•	•	•	•	•	•	•	•	•	•
L3	IP interfaces	4	4	4	4	4	4	4	4	4	4
	IPv6 support	•	•	•	•	•	•	•	•	•	•
	Static route for IPv4/IPv6	124/50	124/50	124/50	124/50	124/50	124/50	124/50	124/50	124/50	124/50
QoS	Number of queues per port	8	8	8	8	8	8	8	8	8	8
	CoS based on contents	•	•	•	•	•	•	•	•	•	•
	Bandwidth control (min. granularity)	• (16 Kbps)	• (16 Kbps)	• (16 Kbps)	• (64 Kbps)	• (16 Kbps)	• (16 Kbps)	• (16 Kbps)	• (16 Kbps)	• (16 Kbps)	• (16 Kbps)
SURVEILLANCE MODE	Video Surveillance Mode	•	•	•	•	•	•				
	ONVIF Device Discovery	•	•	•	•	•	•				
	Video Surveillance Topology	•	•	•	•	•	•				
	Video Surveillance Device Information	•	•	•	•	•	•				
ACL	ACL (Ingress / Egress / VLAN-based ACL)	• (Ingress)	• (Ingress)	• (Ingress)	• (Ingress)	• (Ingress)	• (Ingress)	• (Ingress)	• (Ingress)	• (Ingress)	• (Ingress)
	Based on packet contents	•	•	•	•	•	•				
SECURITY	SSH, SSL (v1/v2/v3)	•	•	•	•	•	•	• (SSH)	• (SSH)	• (SSH)	• (SSH)
	IP-MAC-port binding (IMPB)	•	•	•	•	•	•	•	•	•	•
	ARP spoofing	•	•	•	•	•	•	•	•	•	•
AAA	802.1X access control	•	•	•	•	•	•	•	•	•	•
	RADIUS	•	•	•	•	•	•	•	•	•	•
	Dual image	•	•	•	•	•	•	•	•	•	•
MANAGEMENT	SNMP (v1/v2c/v3), RMON v1	•	•	•	•	•	•	•	•	•	•
	LLDP-MED	•	•	•	•	•	•	•	•	•	•
	ICMPv6	•	•	•	•	•	•	•	•	•	•
	Command Line Interface (CLI)	Compact	Compact	Compact	Compact	Compact	Compact	Full	Full	Full	Full
	Console port							RJ45	RJ45	RJ45	RJ45
	Nuclias Connect	•	•	•	•	•	•				

SWITCHES

Smart Pro with
10G Uplinks
Stackable

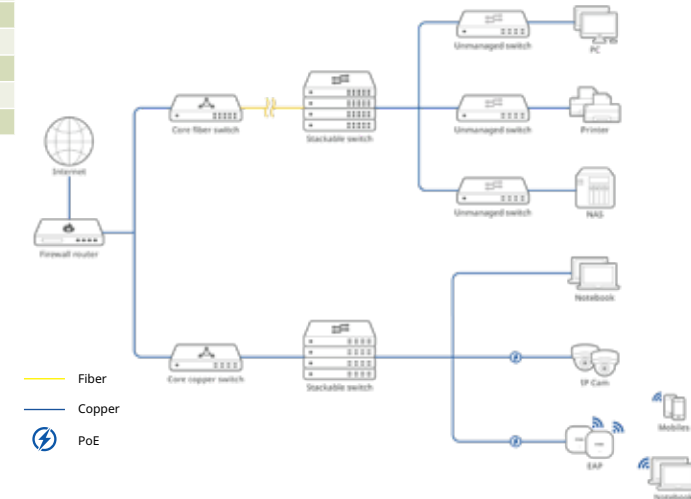
Gigabit Ethernet with 10G Uplinks



	MODEL	DGS-1530-20	DGS-1530-28	DGS-1530-28P	DGS-1530-28S	DGS-1530-52	DGS-1530-52P
HARDWARE	Number of 10/100/1000BASE-T ports	16	24	24		48	48
	Number of 1000Mbps SFP ports				24		
	Number of 10G SFP+ ports	4	4	4	4	4	4
	Physical stacking (device / max Bandwidth)	• (9/80G)	• (9/80G)	• (9/80G)	• (9/80G)	• (9/80G)	• (9/80G)
	Switching capacity	112 Gbps	128 Gbps	128 Gbps	128 Gbps	176 Gbps	176 Gbps
	Maximum Packet Forwarding Rate	83.33 Mpps	95.24 Mpps	95.24 Mpps	95.24 Mpps	130.95 Mpps	130.95 Mpps
	PoE power budget			370 W			370 W (740 with RPS)
PoE capable ports Ports			Port 1-24, up to 30 W			Port 1-48, up to 30 W	
L2	MAC address	16K	16K	16K	16K	16K	16K
	802.1D STP, 802.1w RSTP, 802.1s MSTP	•	•	•	•	•	•
	802.3ad, 802.1AX link aggregation	•	•	•	•	•	•
	Ethernet ring protection switching (ERPS)	•	•	•	•	•	•
VLAN	VLAN group (max static)	4K	4K	4K	4K	4K	4K
	IP interfaces	64	64	64	64	64	64
L3	Static route for IPv4/IPv6	64/32	64/32	64/32	64/32	64/32	64/32
	Number of queues per port	8	8	8	8	8	8
QoS	Bandwidth control (min. granularity)	• (64 Kbps)	• (64 Kbps)	• (64 Kbps)	• (64 Kbps)	• (64 Kbps)	• (64 Kbps)
	Command Line Interface (CLI)	Full	Full	Full	Full	Full	Full
MAN	Console port	RJ-45	RJ-45	RJ-45	RJ-45	RJ-45	RJ-45
	Acoustic (Max)	Fanless	40.9 dB(A)	54.7 dB(A)	52.4 dB(A)	54.7 dB(A)	52.7 dB(A)
PHYSICAL	Power Surge Protection	All Ethernet RJ-45 ports support IEC61000-4-5 6 kV surge protection (Except DGS-1530-28S/E)					
	Redundant Power Supply	DPS-500A	DPS-500A		DPS-500A	DPS-500A	DPS-700



Explore the possibilities



SWITCHES

Layer 3 Managed
Gigabit/2.5G with
10G/25G Uplinks

Gigabit Ethernet with 10G Uplinks | 2.5G Multigigabit Ethernet with 25G Uplinks



MODEL	DGS-3130-30TS	DGS-3130-30PS	DGS-3130-30S	DGS-3130-54TS	DGS-3130-54PS	DGS-3130-54S	DMS-3130-30PS
HARDWARE							
Number of 10/100/1000BASE-T ports	24	24		48	48		
Number of Gigabit SFP ports			24			48	
Number of 100/1000/2.5GBASE-T ports							16
Number of 100/1000/2.5G/5GBASE-T ports							8
Number of 100/1000/2.5G/5G/10GBASE-T ports							2
Number of 10GBASE-T ports	2	2	2	2	2	2	
Number of 10G SFP+ ports	4	4	4	4	4	4	
Number of 10G SFP+/25G SFP28 ports							4
Switching capacity	168 Gbps	168 Gbps	168 Gbps	216 Gbps	216 Gbps	216 Gbps	400 Gbps
PoE standards		802.3af, 802.3at			802.3af, 802.3at		802.3af, 802.3at, 802.3bt
PoE power budget		370 W (740 W with RPS)			370 W (740 W with RPS)		740 W (960 W with RPS)
PoE capable ports		Ports 1-24, up to 30 W (with Perpetual PoE / Fast PoE)			Ports 1-48, up to 30 W (with Perpetual PoE / Fast PoE)		Ports 1-16, up to 30 W (with Perpetual PoE / Fast PoE)
Power supply type	Internal	Internal	Internal	Internal	Internal	Internal	Internal
Physical stacking (device / max bandwidth)	• (9 ² /80G)	• (9 ² /80G)	• (9 ² /80G)	• (9 ² /80G)	• (9 ² /80G)	• (9 ² /80G)	• (9/200G)
Virtual stacking (device)	• (32)	• (32)	• (32)	• (32)	• (32)	• (32)	• (32)
L2							
MAC address	Up to 16K	Up to 16K	Up to 16K	Up to 16K	Up to 16K	Up to 16K	Up to 32K
802.1D STP, 802.1w RSTP, 802.1s MSTP	•	•	•	•	•	•	•
Ethernet ring protection switching (ERPS)	•	•	•	•	•	•	•
802.3ad, 802.1AX link aggregation	•	•	•	•	•	•	•
VLAN							
VLAN group (max static)	4K	4K	4K	4K	4K	4K	4K
Port / MAC / protocol-based VLAN, GVRP	•	•	•	•	•	•	•
Asymmetric, Private, ISM, Super, Voice VLAN	•	•	•	•	•	•	•
L3							
IPv4/IPv6 routing table	1024 / 512	1024 / 512	1024 / 512	1024 / 512	1024 / 512	1024 / 512	1024 / 512
IPv4/IPv6 forwarding table	2048 / 1024	2048 / 1024	2048 / 1024	2048 / 1024	2048 / 1024	2048 / 1024	2048 / 1024
IP interfaces	16	16	16	16	16	16	128
IPv6 neighbour discovery (ND)	•	•	•	•	•	•	•
Static route for IPv4/IPv6	512 / 256	512 / 256	512 / 256	512 / 256	512 / 256	512 / 256	512 / 256
VRRP	•	•	•	•	•	•	•
Multicasting	•	•	•	•	•	•	•
RIP v1/v2, RIPng, OSPFv2/v3	•	•	•	•	•	•	•
QoS							
Number of queues per port	8	8	8	8	8	8	8
CoS based on contents	•	•	•	•	•	•	•
Bandwidth control (min. granularity)	• (8Kbps)	• (8Kbps)	• (8Kbps)	• (8Kbps)	• (8Kbps)	• (8Kbps)	• (8Kbps)
Single/two rate Three Colour Marker	•	•	•	•	•	•	•
ACL							
ACL (Ingress / Egress / VLAN-based)	•	•	•	•	•	•	•
Based on packet contents	•	•	•	•	•	•	•
SECURITY							
SSH, SSL (v1/v2/v3)	•	•	•	•	•	•	•
IP-MAC-port binding (IMPB)	•	•	•	•	•	•	•
ARP spoofing, BPDU attack protection	•	•	•	•	•	•	•
AAA							
802.1X access control, Microsoft NAP	•	•	•	•	•	•	•
RADIUS/TACACS+ authentication	•	•	•	•	•	•	•
MANAGEMENT							
SNMP (v1/v2c/v3), RMON v1/v2, sFlow	•	•	•	•	•	•	•
LLDP-MED	•	•	•	•	•	•	•
802.3ah, 802.1ag, ITU-T Y.1731	•	•	•	•	•	•	•
Command Line Interface (CLI)	Full	Full	Full	Full	Full	Full	Full
Out-of-Band Console/Management port	RJ45	RJ45	RJ45	RJ45	RJ45	RJ45	RJ45

² Lors de l'empilage des modèles DGS-3130-30TS/E/30S/E/30PS/E, le coût d'empilage est de 1 point par unité, le nombre maximum d'unités par pile est donc de 9.
Lors de l'empilage des modèles DGS-3130-54TS/E/54S/E/54PS/E, le coût d'empilage est de 2 points par unité, de sorte que le nombre maximum d'unités par pile est de 6.
Lors de l'empilage de différents modèles DGS-3130/E dans la même pile, les switches peuvent être empilés jusqu'à un maximum de 12 points par pile.

SWITCHES

Layer 3 Managed Gigabit with 10G Uplinks

Gigabit Ethernet with 10G Uplinks



MODEL	DGS-3630-28TC/SI	DGS-3630-28PC/SI	DGS-3630-28SC/SI	DGS-3630-52TC/SI	DGS-3630-52PC/SI
HARDWARE					
Number of Gigabit ports	20	20	20	44	44
Number of Combo 1000BASE-T/SFP ports	4	4	4	4	4
Number of SFP ports			20		
Number of 10G SFP+ ports	4	4	4	4	4
Switching capacity	128 Gbps	128 Gbps	128 Gbps	176 Gbps	176 Gbps
PoE standards		802.3af, 802.3at			802.3af, 802.3at
PoE power budget		370 W (740 W with RPS)			370 W (740 W with RPS)
PoE capable ports		Ports 1-24, up to 30 W			Ports 1-48, up to 30 W
Power supply type	Internal	Internal	Internal	Internal	Internal
Physical stacking (device / max bandwidth)	• (9/80G)	• (9/80G)	• (9/80G)	• (9/80G)	• (9/80G)
Virtual stacking (device)	• (32)	• (32)	• (32)	• (32)	• (32)
Switch Resource Management	IP / LAN / L2 VPN modes	IP / LAN / L2 VPN modes	IP / LAN / L2 VPN modes	IP / LAN / L2 VPN modes	IP / LAN / L2 VPN modes
L2					
MAC address	Up to 68K	Up to 68K	Up to 68K	Up to 68K	Up to 68K
802.1D STP, 802.1w RSTP, 802.1s MSTP	•	•	•	•	•
Ethernet ring protection switching (ERPS)	• (ERPSv2)	• (ERPSv2)	• (ERPSv2)	• (ERPSv2)	• (ERPSv2)
802.3ad, 802.1AX link aggregation	•	•	•	•	•
VLAN					
VLAN group (max static)	4K	4K	4K	4K	4K
Port / MAC / protocol-based VLAN, GVRP	•	•	•	•	•
Port-based, selective double VLAN	•	•	•	•	•
ISM, Super, Voice VLAN	ISM/ Voice VLAN	ISM/ Voice VLAN	ISM/ Voice VLAN	ISM/ Voice VLAN	ISM/ Voice VLAN
DCB - 802.1Qbb, 802.1Qaz	802.1Qbb (10G port only)	802.1Qbb (10G port only)	802.1Qbb (10G port only)	802.1Qbb (10G port only)	802.1Qbb (10G port only)
L3					
IPv4/IPv6 routing table	16K / 8K	16K / 8K	16K / 8K	16K / 8K	16K / 8K
IPv4/IPv6 forwarding table	32K / 16K	32K / 16K	32K / 16K	32K / 16K	32K / 16K
IP interfaces	256	256	256	256	256
Static route for IPv4/IPv6	512 / 256	512 / 256	512 / 256	512 / 256	512 / 256
IPv6 tunneling					
Multicasting	•	•	•	•	•
PIM-DM/SM, DVMRPv3					
RIP v1/v2, RIPng	•	•	•	•	•
OSPFv2/v3, BGP4/BGP4					
IS-IS, IS-ISv6					
MPLS, VPLS					
QoS					
Number of queues per port	8	8	8	8	8
CoS based on contents	•	•	•	•	•
Bandwidth control (min. granularity)	• (8Kbps)	• (8Kbps)	• (8Kbps)	• (8Kbps)	• (8Kbps)
Single/two rate Three Colour Marker	•	•	•	•	•
ACL					
ACL (Ingress / Egress / VLAN-based)	•	•	•	•	•
Based on packet contents	•	•	•	•	•
SECURITY					
SSH, SSL (v1/v2/v3)	•	•	•	•	•
IP-MAC-port binding (IMPB)	•	•	•	•	•
ARP spoofing, BPDU attack protection	•	•	•	•	•
AAA					
802.1X access control, Microsoft NAP	•	•	•	•	•
RADIUS/TACACS+ authentication	•	•	•	•	•
MANAGEMENT					
SNMP (v1/v2c/v3), RMON v1/v2, sFlow	•	•	•	•	•
LLDP-MED	•	•	•	•	•
ICMPv6	•	•	•	•	•
802.3ah, 802.1ag, ITU-T Y.1731	•	•	•	•	•
Command Line Interface (CLI)	Full	Full	Full	Full	Full
Out-of-Band Console/Management port	RJ45	RJ45	RJ45	RJ45	RJ45

Datacenter
10/40/100G
Layer 3

10/40/100G Gigabit Ethernet



MODEL	DXS-3410-32XY	DXS-3410-32SY	DXS-3130-28P	DXS-3610-54S/SI
Number of 100/1000/2.5/5/10GBASE-T ports	24		24 (PoE++ 60W)	
Number of 10G SFP+ ports	4	28		48
Number of 10G SFP+/25G SFP28 ports	4	4	4	
Number of 40G QSFP+/100G QSFP28 ports				6
Switching capacity	760 Gbps	760 Gbps	680 Gbps	2.16 Tbps
Power supply redundancy	• Optional DPS-500A • Optional DPS-500DC	• Optional DPS-500A • Optional DPS-500DC	• Optional DPS-PWR1200AC • Optional DPS-PWR1200DC	1+1
Physical stacking (device / max bandwidth)	• (9/200G)	• (9/200G)	• (9/200G)	• (12/1200G) / MLAG
Virtual stacking (device)	• (32)	• (32)	• (32)	• (32)
MAC address	32K	32K	32K	Up to 288K
802.1D STP, 802.1w RSTP, 802.1s MSTP	•	•	•	•
Ethernet ring protection switching (ERPS)	•	•	•	•
802.3ad, 802.1AX Link Aggregation	• (802.1AX/802.3ad)	• (802.1AX/802.3ad)	• (802.1AX/802.3ad)	• (802.1AX only)
VLAN group (max static)	4K	4K	4K	4K
Port / MAC / protocol-based VLAN, GVRP	•	•	•	•
Port-based, selective double VLAN	•	•	•	•
Multicast VLAN, ISM, Super, Voice VLAN	•	•	•	• (Super/ISM VLAN)
Asymmetric VLAN	•	•	•	•
OpenFlow				v1.3
DCB - 802.1Qbb, 802.1Qaz	• (802.1Qbb)	• (802.1Qbb)		• (802.1Qbb)
IPv4/IPv6 routing table	12K shared by IPv4/IPv6	12K shared by IPv4/IPv6	1K shared by IPv4/IPv6	32K / 16K
IPv4/IPv6 forwarding table	16K / 8K	16K / 8K	16K IPv4 / 8K IPv6	144K / 72K
IP interfaces	256	256	128	256
Static route for IPv4/IPv6	256 / 128	256 / 128	512 / 256	1K / 512
IPv6 tunneling				•
Multicasting	•	•	•	• (/EI)
PIM-DM/SM, DVMRPv3	• PIM-SM for IPv4	• PIM-SM for IPv4	• PIM-SM for IPv4	• (/EI)
MPLS, VPLS				• (MPLS, VPLS with /EI)
Dynamic Routing: OSPFv2/v3, BGP4/BGP4+, RIP v1/v2, RIPng	• OSPFv2/v3, RIP v1/v2, RIPng	• OSPFv2/v3, RIP v1/v2, RIPng	• OSPFv2/v3, RIP v1/v2, RIPng	• (BGP4/BGP4+ with /EI)
Number of queues per port	8	8	8	8
CoS based on contents	•	•	•	•
Bandwidth control (min. granularity)	• (8Kbps)	• (8Kbps)	• (8Kbps)	• (8Kbps)
Single/two rate Three Color Marker	•	•	•	•
ACL (Ingress / Egress / VLAN-based)	•	•	•	•
Based on packet contents	•	•	•	•
SSH, SSL (v1/v2/v3)	•	•	•	•
IP-MAC-port binding (IPMB)	•	•	•	•
ARP spoofing, BPDU attack protection	•	•	•	•
802.1X access control, Microsoft NAP	•	•	•	•
RADIUS/TACACS+ authentication	•	•	•	•
SNMP (v1/v2c/v3), RMON v1/v2, sFlow	•	•	•	•
LLDP-MED	•	•	•	•
ICMPv6	•	•	•	•
802.3ah, 802.1ag, ITU-T Y.1731	•	•	•	•
Command Line Interface (CLI)	Full	Full	Full	Full
Out-of-Band Console/Management port	RJ45	RJ45	RJ45	RJ45

D-View 8 (DV-800)



Advanced network management solution based on SNMP. Intelligent monitoring of large Switching and Wireless topologies. Smart analysis and alerts for incident prevention. Supports up to 5,000 devices and multi-site capability. Easy discovery of switches, Wi-Fi access points, and other devices via SNMP.



Real-time network monitoring



VLAN and L3 topologies



sFlow Analyser (Enterprise version only)



Installable on Windows and Linux



Role-based management



Batch Configuration



Intuitive and customisable interface



Scheduled firmware updates



Centralised reporting



Local or remote management (Enterprise version)



Centralised management

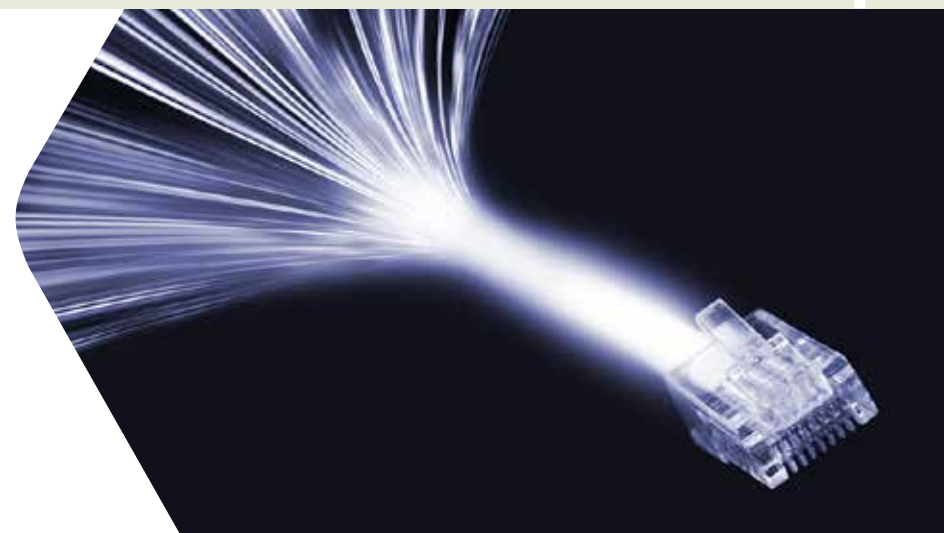
Download a 90-day trial version here:

dview.dlink.com

SWITCHES

Power Over Ethernet

PoE (Power over Ethernet) technology uses standard Ethernet LAN cabling to power and transmit data to devices such as Wi-Fi access points, cameras, or IP phones. This technology is constantly evolving, and the range of PoE products is expanding daily, including LED lighting, laptops, displays, smart building control, Smart Cities applications, Industry 4.0, IoT, and more.



We offer the widest portfolio of PoE switches compliant with IEEE 802.3af (15.4W per port), IEEE 802.3at (30W per port), and IEEE 802.3bt (up to 90W per port) standards. By using standardised technologies and avoiding proprietary PoE solutions, we ensure interoperability in any installation—not only between our solutions but also with third-party PoE devices.

Our Wi-Fi access points are also PoE-compliant to ensure compatibility, which is essential for any network deployment.

If a network already includes non-PoE switches or requires extended connections, our PoE injectors, splitters, and extenders provide a seamless solution.

Surveillance Switches

GIGABIT ETHERNET SMART MANAGED



MODEL	DSS-200G-10MPP	DSS-200G-28MPP
Number of 10/100BASE-TX ports	8	24
Number of 10/100/1000BASE-T ports	2	4
Number of 100/1000 Mbps SFP ports	20 Gbps	56 Gbps
Number of Combo 1000BASE-T/SFP ports	802.3af, 802.3at, 802.3bt	802.3af, 802.3at, 802.3bt
Switching capacity	242 W	517 W
PoE standards	Ports 1-8, up to 90 W	Ports 1-8, up to 90 W Ports 9-24, up to 30 W
PoE power budget	•	•
PoE capable ports	Up to 250 m*	Up to 250 m*
PoE usage indicator LED	QoS, extend, isolate, PD-alive, STP	QoS, extend, isolate, PD-alive, STP
Extended PoE range	•	•
DIP switch modes	•	•
6kV Surge protection	•	•
Metal enclosure	•	•
Fanless	•	•
Alarm port	Internal	Internal
Power supply type	8K	8K
MAC address	•	•
802.1D STP, 802.1w RSTP	•	•
802.3ad link aggregation	•	•
Ethernet ring protection switching (ERPS)	128	128
VLAN group (max static)	•	•
Port-based VLAN, Asymmetric VLAN	•	•
Auto Voice/Surveillance VLAN	4	4
Number of queues per port	• (16 Kbps)	• (16 Kbps)
Bandwidth control (min. granularity)	•	•
Video Surveillance Mode	•	•
ONVIF Device Discovery	•	•
Video Surveillance Topology	•	•
Video Surveillance Device Information	•	•

* The 250m long range mode is subject to cabling quality and/or IP camera's electrical design. Compatibility testing is recommended prior to use. UTP CAT5e rated cables (or higher) are required.

ACCESSORIES FOR SWITCHES

SFP/SFP+ Transceivers

Gigabit Ethernet SFP Transceivers



10//25/40 Gigabit Ethernet SFP+/SFP28/QSFP+ Transceivers

MODEL	DGS-712	DEM-310GT*	DEM-311GT*	DEM-410T	DEM-431XT*	DEM-432XT	DEM-S2801SR
Standard	IEEE 802.3ab 1000BASE-T	IEEE 802.3z 1000BASE-LX	IEEE 802.3z 1000BASE-SX	IEEE 802.3an 10GBase-T	IEEE 802.3ae 10GBASE-SR	IEEE 802.3ae 10GBASE-LR	IEEE 802.3by 25GBASE-SR
Connector	RJ45	Duplex LC	Duplex LC	RJ45	Duplex LC	Duplex LC	Duplex LC
Cable Type (Maximum Distance)	Single-Mode	9/125 µm fibre (10 km)				9/125 µm fibre (10 km)	
	Multi-Mode		50/125µm fibre (550m) 62.5/125µm fibre (220m)		50/125µm fibre (OM2 -82m, OM3-300m), 62.5/125µm fibre (OM1-33m)		50/125µm (OM3-70m, OM4-100m)
	Cat	Cat5, Cat5e, Cat6		Cat5e, Cat6a (30 m)			
Wavelength		1310 nm	850 nm		850 nm	1310 nm	850 nm
Power	3.3 V	3.3 V	3.3 V	3.3 V	3.3 V	3.3 V	3.3 V
Hot-Pluggable	•	•	•	•	•	•	•

*Transceivers available in packs of 10 units, with a significant discount on the unit price. Please contact us or your authorized distributor.

DEM-310GT/10 DEM-431XT/10 DEM-311GT/10

Industrial Accessories

Media Converters

Industrial



MEDIA CONVERTERS	DMC-F025C/E	DMC-F155C/E	DMC-G025C/E	DMC-G105C/E
Standards	10/100Base-TX 100Base-FX	10/100Base-TX 100Base-FX	100/1000Base-T 1000Base-SX	100/1000Base-T 1000Base-LX
Connectors	SC / RJ45	SC / RJ45	SC / RJ45	SC / RJ45
Data Rate				
Fibre Type	Single-Mode	Single-Mode	Multi-Mode	Single-mode
Maximum Distance	2 km	15 km	550 m	10 km
Operating Temperature				
IP-Rating				

	MODEL	ACCESSORIES
POWER SUPPLIES	DIS-H30-24	30W 24VDC Ultra Slim DIN Rail PSU • Input: 85 ~ 264VAC • Output: 21.6 ~ 29V DC • Din rail TS-35/7.5 or 15 mountable • -30~70°C operating temperature
	DIS-H60-24	60W 24VDC Ultra Slim DIN Rail PSU • Input: 85 ~ 264VAC • Output: 21.6 ~ 29V DC • Din rail TS-35/7.5 or 15 mountable • -30~70°C operating temperature
	DIS-N240-48	240W 48VDC DIN Rail PSU • Input: 90 ~ 264VAC • Output: 48 ~ 55V DC • Din rail TS-35/7.5 or 15 mountable • -20~70°C operating temperature
	DIS-N480-48	480W 48VDC DIN Rail PSU • Input: 90 ~ 264VAC • Output: 48 ~ 55V DC • Din rail TS-35/7.5 or 15 mountable • -20~70°C operating temperature
SFP TRANSCEIVERS	DIS-S301SX	1-port Mini-GBIC SFP to 1000BaseSX Multi-Mode Fibre Transceiver • up to 550 m • -40~85°C operating temperature
	DIS-S302SX	1-port Mini-GBIC SFP to 1000BaseSX Multi-Mode Fibre Transceiver • up to 2 km • -40~85°C operating temperature
	DIS-S310LX	1-port Mini-GBIC SFP to 1000BaseLX Single-Mode Fibre Transceiver • up to 10 km • -40~85°C operating temperature

Redundant Power Supplies



MODEL	DPS-500A	DPS-520	DPS-700	DPS-PWR740AC
Output Power	140 W	180 W	589 W	740 W
Input Power	90 to 264 V AC	90 to 264 V AC	90 to 264 V AC	90 to 264 V AC
Dimensions	172x257x43mm	196x257x52mm	441x139x44mm	185x73.5x40mm
Mounting Options	DPS-800	DPS-800	19in Rack, 1U	N/A

Switch Cables



MODEL	DEM-CB100S/300S	DEM-CB100Q28	DEM-CB100S28
Cable Series Type	SFP+ Direct Attach	QSFP28 Direct Attach	
Standard	SFP MSA	SFP MSA	
Device Rate	10 Gbps	100 Gbps	
Connector Type	SFP+ Cable Assembly	QSFP28 to QSFP28 Cable Assembly	
Wire AWG	30	30	
Minimum Cable Bend Radius	23.5 mm	34.5 mm	
Cable Length	100/300 cm	100 cm	
Voltage	30 V AC	30 V AC	
Current	0.5 A	0.5 A	
Operating Temperature	-40°C to 85°C	-40°C to 75°C	
Connectivity	Recommended for use only with D-Link Switching Products	Physical Stacking Cable for DXS-3610 Series	

INDUSTRIAL SOLUTION



Industrial M2M Switches



D-Link's industrial solutions are designed to withstand a wide range of temperatures, vibrations, and shocks, making them suitable for harsh environments. Additionally, the switches feature network management capabilities to ensure maximum redundancy with various ring architectures, such as Rapid-Recovery Ring and ERPS. These switches are essential for robot control, factory automation, as well as for the growing demand in Industry 4.0 and Smart Cities applications.

With all industry certifications

1 Versatile Installation

They can be deployed on walls or DIN rails and inside junction boxes, outdoor cabinets, etc. They can withstand temperatures above 75°.

2 High Availability and Security

Extended network redundancy features with ring architectures and ERPS. IEC 62443-4-1 Certification: Product Security Development Life-Cycle Requirements, a security requirement in most projects.



DIS-100G Series Industrial Fast Ethernet / Gigabit Unmanaged Switches for edge deployment	DIS-200G Series Industrial Gigabit Smart Managed Switches for aggregation deployment	DIS-300G Industrial Gigabit Managed Switches for aggregation/core deployment
Plug and play; compact size	Cost-effective; compact size	High performance; compact size
-40 to 75° operating temperature	-40 to 65° operating temperature	-40 to 75° operating temperature
DIN-Rail mounting	DIN-Rail mounting	DIN-Rail
5-port	12-port	8/12/14-port
Redundant power inputs	Optional PoE 802.3af/at support	Optional PoE 802.3af/at support
Optional PoE 802.3af/at support (DIS-100G-5PSW)	VLAN support for added security	VLAN support for added security

Industrial-grade accessories are also available: power supplies, SFP transceivers, and media converters. See the tables on page 17.

Industrial Switches 10/100 and Gigabit



	MODEL	DIS-100G-5SW	DIS-100G-5PSW	DIS-100G-6S/10S	DIS-200G-12S	DIS-200G-12PS	DIS-300G-12SW	DIS-300G-8PSW	DIS-300G-14PSW
HARDWARE	Number of Fast Ethernet ports								
	Number of Gigabit ports	4	4	4 / 8	10	10	8	6	10
	Number of SFP ports	1	1	2	2	2	4	2	4
	Number of 10G SFP+ ports								
	PoE standards		802.3af, 802.3at			802.3af, 802.3at		802.3af, 802.3at	802.3af, 802.3at
	PoE power budget		120 W			240 W		120 W	240 W
	PoE capable ports		Ports 1-4, up to 30 W			Ports 1-8, up to 30 W		Ports 1-4, up to 30 W	Ports 1-2, up to 60 W Ports 3-8, up to 30 W
	Input voltage range	12-58 VDC	12-58 VDC, 54-58V for PoE+, 48-58V for PoE	12-48 VDC	12-48 VDC	48-58 VDC	12-58 VDC	48-58 VDC (54~58V VDC for PoE+)	48-58 VDC (54~58V VDC for PoE+)
	Compatible power supplies	DIS-H30-24, DIS-H60-24, DIS-N240-48, DIS-N480-48	DIS-N240-48, DIS-N480-48	DIS-H30-24, DIS-H60-24, DIS-N240-48, DIS-N480-48	DIS-H30-24, DIS-H60-24	DIS-N240-48, DIS-N480-48	DIS-H30-24, DIS-H60-24, DIS-N240-48, DIS-N480-48	DIS-N240-48, DIS-N480-48	DIS-N240-48, DIS-N480-48
	Redundant power input option	•	•	•	•	•	•	•	•
	Mounting option	Din-rail and wall	Din-rail and wall	Din-rail and wall	Din-rail and wall	Din-rail and wall	Din-rail and wall	Din-rail and wall	Din-rail and wall
	Operating temperature range	-40° to 75°C	-40° to 75°C	-20° to 65°C	-40° to 65°C	-40° to 65°C	-40 to +75°C	-40 to +75°C	-40 to +75°C
	Vibration, shock and freefall certification								
	NEMA-TS2, EN50121-4 (compliant)	•	•				•	•	•
EMC certification									
Ingress protection	IP30	IP30	IP40	IP30	IP30	IP30	IP30	IP30	
L2	MAC address	2K	2K	4K	8K	8K	8K	8K	8K
	802.1D STP, 802.1w RSTP, 802.1s MSTP				•	•	•	•	•
	Fast Failover Protection Rings				• (ERPS, 50-200ms)	• (ERPS, 50-200ms)	• (<20ms)	• (<20ms)	• (<20ms)
	802.3ad, 802.1AX link aggregation				•	•	•	•	•
VLAN	VLAN group (max static)				128	128	256	1024	1024
	Port / MAC / protocol-based VLAN, GVRP				Port-based, GVRP	Port-based, GVRP	•	•	•
	Port-based double VLAN						•	•	•
	Auto-Servillance, Voice VLAN				•	•			
Multicast protocols				IGMP v1/v2, IGMP snooping	IGMP v1/v2, IGMP snooping	IGMP v1/v2, IGMP snooping	IGMP v1/v2, IGMP snooping	IGMP v1/v2, IGMP snooping	
QoS	802.1p	•	•	•	•	•	•	•	•
	Policy-based access control engine								
	Number of queues per port	4	4	8	4	4	8	8	8
	Traffic shaper				Port-based	Port-based	Port-based	Port-based	Port-based
Traffic policer									
SECURITY	Multicast/Broadcast/Flooding Storm Control				•	•	•	•	•
	Access control				Web-based	Web-based	IP/MAC/policy-based	IP/MAC/policy-based	IP/MAC/policy-based
AAA	802.1X access control						•	•	•
	RADIUS/TACACS+ authentication				RADIUS only	RADIUS only	•	•	•
MANAGEMENT	SNMP (v1/v2c/v3), RMON v1				SNMP only	SNMP only	•	•	•
	Web-based management				•	•	•	•	•
	Command line interface (CLI)				•	•	•	•	•
	HTTPS, SSH				•	•	•	•	•
	Syslog				•	•	•	•	•
	Command Line Interface (CLI)				Full	Full	Full	Full	Full
Console port				RJ45	RJ45	RJ45	RJ45	RJ45	

NUCLIAS CONNECT

What is NUCLIAS Connect?

NUCLIAS Connect is the ultimate platform to manage and monitor your network infrastructure (switching and Wi-Fi) from anywhere, at any time. Everything is designed to make your daily operations easier.

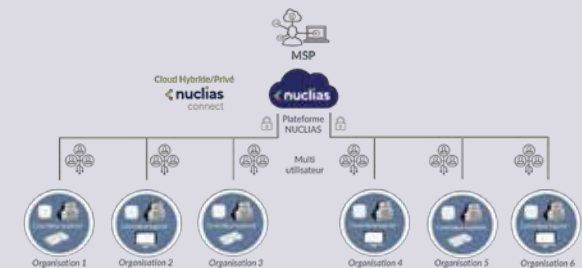
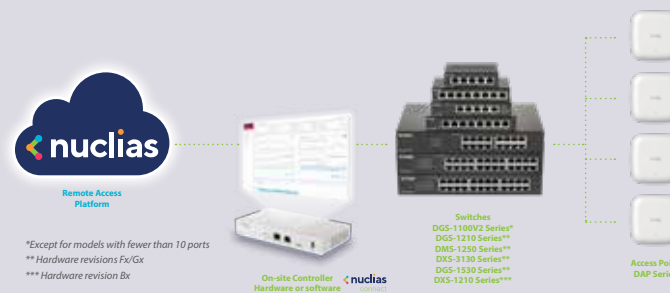
With automated deployment capabilities, scheduled task planning, and alerts, you save time by eliminating repetitive maintenance and configuration tasks.

With NUCLIAS Connect, you can:

- Easily and quickly deploying your network equipment from a single point

- Managing, monitoring, and simplifying network maintenance
- Securing your company's network and evolving it
- Receiving alerts in case of malfunctions
- Complying with public Wi-Fi regulations

- Easy and Fast Deployment
- Supervision, alerts, and notifications
- Manage up to 1500 devices
- Multi-tenant, multi-site
- Network protection
- Automation of maintenance tasks



How does NUCLIAS Connect work?

At the heart of your infrastructure is the Nuclias Connect controller. Whether software or hardware, the choice is yours!

The controller serves various roles and objectives:

1. Centralise and simplify the deployment and management of your network devices through profiles. Profile-based management saves you time by avoiding repetitive deployment tasks.
2. Monitor your network: deployment reports, network topology, Wi-Fi client statistics, switches, etc.

3. Alert you in case of offline devices, firmware updates, configuration changes, etc.
4. Ensure network event traceability (logs).

It simplifies the installation of switches, Wi-Fi access points, and VPN routers, which:

- Retrieve their configuration directly from the controller
- Report and send various information to the controller (statuses, statistics, etc.)

This provides you with a single interface to get an overview of your network infrastructure and various sites.

PROFESSIONAL WI-FI



MODEL	DAP-2682	DAP-2662	DAP-3666	DAP-X2810	DAP-X2850	DAP-X3060	DAP-X3060OU	DAP-E9560
WiFi4EU/Hotspot 2.0 compatible		•	•					
Wireless standards	Simultaneous a/n/ac (Wave 2) and b/g/n	Simultaneous a/n/ac (Wave 2) and b/g/n	Simultaneous a/n/ac (Wave 2) and b/g/n	Simultaneous a/n/ac/ax (Wi-Fi 6) and b/g/n/ax	Simultaneous a/n/ac/ax (Wi-Fi 6) and b/g/n/ax	Simultaneous a/n/ac/ax (Wi-Fi 6) and b/g/n/ax	Simultaneous a/n/ac/ax (Wi-Fi 6) and b/g/n/ax	Wi-Fi 7
802.11k/v/r fast roaming		•	•	• (802.11k/r only)	• (802.11k/r only)	• (802.11k/r only)	• (802.11k/r only)	• (802.11be)
Wireless frequency range	2.4 to 2.4835 GHz 5.15 to 5.85 GHz	2.4 to 2.4835 GHz 5.15 to 5.875 GHz	2.4 to 2.4835 GHz 5.15 to 5.875 GHz	2.4 to 2.483 GHz, 5.15 to 5.35 GHz, 5.47 to 5.85 GHz	2.4 to 2.483 GHz, 5.15 to 5.35 GHz, 5.47 to 5.85 GHz	2.4 to 2.483 GHz, 5.15 to 5.35 GHz, 5.47 to 5.85 GHz	2.4 to 2.483 GHz, 5.15 to 5.35 GHz, 5.47 to 5.85 GHz	2.4 to 2.483 GHz, 5.15 to 5.35 GHz, 5.47 to 5.85 GHz, 5.925 to 7.125 GHz
Maximum wireless speed	1700 Mbps - 5 GHz 600 Mbps - 2.4 GHz	867 Mbps - 5 GHz 300 Mbps - 2.4 GHz	867 Mbps - 5 GHz 300 Mbps - 2.4 GHz	1200 Mbps - 5 GHz 600 Mbps - 2.4 GHz	2402 Mbps - 5 GHz 1147 Mbps - 2.4 GHz	2401 Mbps - 5 GHz 574 Mbps - 2.4 GHz	2401 Mbps - 5 GHz 574 Mbps - 2.4 GHz	5764 Mbps - 6 GHz 2402 Mbps - 5 GHz 688 Mbps - 2.4 GHz
MIMO	• (MU-MIMO)	• (MU-MIMO)	• (MU-MIMO)	• (MU-MIMO)	• (MU-MIMO)	• (MU-MIMO)	• (MU-MIMO)	• (MU-MIMO)
Antenna type	4 x 4 embedded omni-directional	2 x 2 embedded omni-directional	2 x 2 embedded omni-directional	2 x 2 embedded omni-directional	4 x 4 embedded omni-directional	2 x 2 embedded omni-directional	2 x 2 embedded omni-directional	2 x 2.4 GHz internal antennas 2 x 5 GHz internal antennas 2 x 6 GHz internal antennas
Antenna gain	3.7 dBi for 2.4GHz 4.8 dBi for 5GHz	3 dBi for 2.4GHz 4 dBi for 5GHz	6 dBi for 2.4GHz 6 dBi for 5GHz	3.2 dBi for 2.4GHz 4.2 dBi for 5GHz	3.5 dBi for 2.4GHz 5.5 dBi for 5GHz	3 dBi for 2.4GHz 3 dBi for 5GHz	3 dBi for 2.4GHz 3 dBi for 5GHz	
Power-over-Ethernet (PoE)	• (802.3at)	• (802.3af)	• (802.3af)	• (802.3at)	• (802.3at)	• (802.3at)	• (802.3at)	• (802.3bt)
DC power input								20V/2.25A
Wired interface	2 x Gigabit	1 x Gigabit	2 x Gigabit	1 x Gigabit	1 x 2.5 Gigabit 1 x Gigabit	1 x 2.5 Gigabit	1 x 2.5 Gigabit	1 x 10 Gigabit
Type of housing	Plastic	Plastic	Plastic	Plastic	Plastic	Plastic	Plastic	Plastic
Outdoor housing (IP rating)			• (IP68)					
Surge/ESD protection								
DIN rail mountable								
Maximum number of SSIDs	16	16	16	16	16	16	16	16
Multiple modes (AP, WDS with AP, WDS / bridge, client)	•	•	•	•	•	•	•	•
WMM-PS/802.11e (U-APSD)	•	•	•	•	•	•	•	•
Wi-Fi scheduler	•	•	•	•	•	•	•	•
AP traffic load balance	•	•	•	•	•	•	•	•

HARDWARE

WIRELESS

100% CLOUD MANAGEMENT



People simply want things to work as they should, and network management is no exception. D-Link designed Nuclias to be a networking solution with a simple and user-orientated design, packed with rich features and functionality, designed to address the needs of everyone.



100% CLOUD MANAGEMENT

Nuclias Cloud allows any organisation with any level of IT resource to quickly and easily set up, configure, monitor, troubleshoot, and manage their network deployment remotely through a web browser, or the dedicated Nuclias tablet app.

Zero-Touch Deployment

Zero-touch deployment and reduced installation and configuration costs thanks to a centralised, profile-based cloud management system.

Hassle-Free Management

Nuclias Cloud is a turnkey solution with simple installation and management, designed to work even if the connection to the cloud is interrupted.

Unlimited Scalability

Suitable for small branch offices to large networks, Nuclias Cloud provides unlimited capacity and uncompromised throughput with its low in-band data management footprint.

Main features

- Zero-touch provisioning
- Role-based administration
- Auditable change logs
- Authentication via customisable captive portal, 802.1x and RADIUS server
- Social login for Wi-Fi access supported
- Advanced traffic report and data analysis
- Intuitive web-based interface with multilingual support
- Automatic monitoring and alerts
- Over-the-web firmware upgrades
- Searchable network-wide event log
- Intuitive VLAN Configuration
- Cloud based RF Optimisation

100% CLOUD MANAGEMENT



The 100% Cloud network management solution for switches, Wi-Fi, and SD-WAN VPN gateway.

Wi-Fi access points and Smart Switches are deployed without the need for an on-site technician, simply by connecting to the network and provisioning them in the Cloud account, allowing installation and configuration to be launched remotely. The 100% Cloud centralised management streamlines the installation and management of any network environment.

With Nuclias Cloud, network configurations and software updates are sent to remote devices via the Cloud, without requiring on-site equipment or specialised personnel. Additionally, the SD-WAN VPN gateway DBG-2000 adds a layer of security with the most advanced VPN, dynamic web/application filtering, and high-performance WAN load balancing.



Gigabit Cloud-Managed Switches

		Gigabit Ethernet					
		DBS-2000-10MP	DBS-2000-28	DBS-2000-28P	DBS-2000-28MP	DBS-2000-52	DBS-2000-52MP
HARDWARE	MODEL	DBS-2000-10MP	DBS-2000-28	DBS-2000-28P	DBS-2000-28MP	DBS-2000-52	DBS-2000-52MP
	Number of Gigabit ports	8	24	24	24	48	48
	Number of Combo 1000BASE-T/SFP ports		4	4	4	4	4
	Number of SFP ports	2					
	Switching capacity	20 Gbps	56 Gbps	56 Gbps	56 Gbps	104 Gbps	104 Gbps
	PoE standards	802.3af, 802.3at		802.3af, 802.3at	802.3af, 802.3at		802.3af, 802.3at
	PoE power budget	130 W		193 W	370 W		370 W
	PoE capable ports	Ports 1-8, up to 30W		Ports 1-24, up to 30W	Ports 1-24, up to 30W		Ports 1-48, up to 30W
	Time-based PoE	•		•	•		•
	Fanless	•	•	•	•	•	•
802.3az EEE	•	•	•	•	•	•	
Power supply type	Internal	Internal	Internal	Internal	Internal	Internal	
L2	MAC address	8K	8K	8K	8K	16K	16K
	802.1D STP, 802.1w RSTP	•	•	•	•	•	•
	802.3ad link aggregation	•	•	•	•	•	•
VLAN	VLAN group (max static)	256	256	256	256	256	256
	Port-based VLAN, Voice VLAN	•	•	•	•	•	•
SECURITY	SSL	•	•	•	•	•	•
	ACL	•	•	•	•	•	•
	Port security	•	•	•	•	•	•

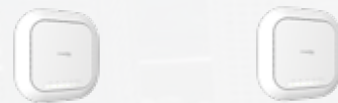
Nuclias Cloud Wi-Fi 6 Access Points



SD-WAN Gateway Firewall/VPN*



Nuclias Cloud Access Points



MODEL	DBA-X1230P	DBA-X2830P
Indoor/Outdoor	Indoor	Indoor
Wireless standards	Simultaneous Dual-band a/n/ac/ax and b/g/n/ax	
Antenna	2 x 2 embedded	4 x 4 embedded
Maximum wireless speed	1200 Mbps - 5 GHz 600 Mbps - 2.4 GHz	2402 Mbps - 5 GHz 1147 Mbps - 2.4 GHz
MU-MIMO	•	•
Power-over-Ethernet	• (802.3at)	• (802.3at)
Wired interface	1 x Gigabit Ethernet	1 x 2.5G Ethernet, 1 x Gigabit Ethernet
Type of Housing	Plastic	Plastic
WPA3 Wi-Fi Encryption	•	•

MODEL	DBG-2000
Number of Gigabit ports	4
Configurable WAN (load balancing)/LAN/DMZ ports	4
Console port	•
Firewall throughput	1.8 Gbps
3DES/AES	450 Mbps
SSL VPN	200 Mbps
Maximum concurrent sessions	200,000
Maximum IPsec VPN, PPTP/L2TP, SSL, GRE VPN tunnel	200
Intrusion prevention system	•
Dynamic web content filtering	•

MODEL	DBA-2520P	DBA-2820P
Indoor/Outdoor	Indoor	Indoor
Surge/ESD Protection		
Wireless standards	Simultaneous Dual-band a/n/ac (Wave 2) and b/g/n	
Antenna	3 x 3 embedded	4 x 4 embedded
Maximum wireless speed	1,300 Mbps - 5 GHz 600 Mbps - 2.4 GHz	1,733 Mbps - 5 GHz 800 Mbps - 2.4 GHz
MU-MIMO	•	•
Power-over-Ethernet	• (802.3at)	• (802.3at)
Wired interface	2 x Gigabit Ethernet	2 x Gigabit Ethernet
Type of Housing	Plastic	Plastic
WPA3 Wi-Fi Encryption	•	•

* DBG-2000 can be integrated into any type of network, not necessarily Nuclias Cloud.



NETWORK MANAGEMENT



Choosing Network Management

Our network management options allow you to centrally manage both Switching and Wireless networks, whether within a local network or remotely.

Whether it's solutions based on free software like Nuclias Connect, 100% cloud-based platforms like Nuclias Cloud, or traditional Wireless controllers, they provide network administrators with full access and an intuitive interface to manage any network topology, from the simplest installations to the most complex deployments.

		Nuclias Connect Hardware Controller		Nuclias Hyper Hardware Controller	Nuclias Connect Hardware Controller	Nuclias Connect Software Controller
		DNH-1000	DNH-3000	DNH-5000	DNH-100	DNC-100
HARDWARE DESIGN	Model	DNH-1000	DNH-3000	DNH-5000	DNH-100	DNC-100
	Network Interface	2.5G Ethernet Port x 1	10G SFP Slot x 2 1G Ethernet Port x 4	2.5G Ethernet Port x 2	1G Ethernet Port x 1	-
	Other Interface	-	-	USB 3.0 x 1 USB 2.0 x 2 HDMI x 2	Micro SD x 1 USB 3.0 x 1	-
DEVICE MANAGEMENT	Storage Interface	USB 3.0 x 1	USB 3.0 x 1	USB 3.0 x 1	-	-
	Management Scale	500 devices	1500 devices	2000 devices*	100 devices	1500 devices
	Network Type	Medium/Large Network	Large Network	Large Network	Medium Network	Large Network
SYSTEM MANAGEMENT	Managed Device	EAPs Selected Aggregation and Edge Switches	EAPs Selected Aggregation and Edge Switches	EAPs Core, Aggregation and Edge Switches	EAPs Aggregation and Edge Switches	EAPs Aggregation and Edge Switches
	Setup Wizard	Yes	Yes	Yes	Yes	Yes
	Role based Administration	Yes	Yes	Yes	Yes	Yes
	Multi-Site Management	Yes	Yes	Yes	Yes	Yes
	Device Layer 2/3 Discovery	Layer 2/Layer 3	Layer 2/Layer 3	Layer 2/Layer 3	Layer 2/Layer 3	Layer 2/Layer 3
	Custom/Topology/Device View	Yes	Yes	Yes	Yes	Yes
	Event Alarm and Notification	Yes	Yes	Yes	Yes	Yes
	Network Summary Report	Yes	Yes	Yes	Yes	Yes
	Batch Configuration	Yes	Yes	Yes	Yes	Yes
	Batch Firmware Upgrading	Yes	Yes	Yes	Yes	Yes
	Online Firmware Upgrade	Yes	Yes	Yes	Yes	Yes
	Single Sign On	Yes	Yes	No	Yes	Yes
REST API Support	Yes	Yes	Yes	Yes	Yes	
Multilingual	Yes	Yes	Yes	Yes	Yes	
WIRELESS FUNCTION	Captive Portal Authentication	Local DB, Remote Radius, LDAP, External Captive Portal, POP3, Voucher	Local DB, Remote Radius, LDAP, External Captive Portal, POP3, Voucher	Local DB, Remote Radius, LDAP, External Captive Portal, POP3, Voucher	Local DB, Remote Radius, LDAP, External Captive Portal, POP3, Voucher	Local DB, Remote Radius, LDAP, External Captive Portal, POP3, Voucher
	IP/MAC Filter	Yes	Yes	Yes	Yes	Yes
	Auto RF Management	Yes	Yes	Yes	Yes	Yes
	Bandwidth Optimization	Yes	Yes	Yes	Yes	Yes
	Wireless Schedule	Yes	Yes	Yes	Yes	Yes
	AP reboot Schedule	Yes	Yes	Yes	Yes	Yes
	Neighbor AP Detection	Yes	Yes	Yes	Yes	Yes
	Payment Gateway (Paypal)	Yes	Yes	Yes	Yes	Yes

*Nuclias Connect device: Up to 1800 ; SNMP managed Device: Up to 200

UNIFIED WI-FI

5 KM RADIO LINKS

20 KM RADIO LINK



		DAP-3711	DAP-3712	DWL-6610AP	DWL-6620APS	DWL-8620AP	DWL-X8630AP
HARDWARE	MODEL	DAP-3711	DAP-3712	DWL-6610AP	DWL-6620APS	DWL-8620AP	DWL-X8630AP
	Wireless standards	a/n/ac	a/n/ac	Simultaneous Dual-Band a/n/ac and b/g/n	Simultaneous Dual-Band a/n/ac (Wave 2) and b/g/n	Simultaneous Dual-Band a/n/ac (Wave 2) and b/g/n	Simultaneous Dual-Band a/n/ac/ax and b/g/n
	Wireless frequency range	5180~5320 MHz, 5745~5825 MHz	5180~5320 MHz, 5745~5825 MHz	2.4 to 2.4835GHz, 5.15 to 5.875GHz	2.4 to 2.4835GHz, 5.15 to 5.875GHz	2.4 to 2.4835GHz, 5.15 to 5.875GHz	2.4 to 2.4835GHz, 5.15 to 5.85 GHz
	Maximum wireless speed	867 Mbps - 5 GHz	867 Mbps - 5 GHz	867 Mbps - 5 GHz, 300 Mbps - 2.4 GHz	867 Mbps - 5 GHz, 400 Mbps - 2.4 GHz	1733 Mbps - 5 GHz, 800 Mbps - 2.4 GHz	2402 Mbps - 5 GHz, 1147 Mbps - 2.4 GHz
	MIMO	•	•	•	• (MU-MIMO)	• (MU-MIMO)	• (MU-MIMO)
	Antenna type	2 x 2 embedded sector	2 x 2 dish sector	2 x 2 embedded / detachable omni-directional	2 x 2 embedded omni-directional	4 x 4 embedded / detachable omni-directional	4 x 4 embedded omni-directional
	Smart Antennas				•		
	Antenna gain	15 dBi	23 dBi	4 / 3 dBi for 2.4GHz, 4 dBi for 5GHz	4 dBi for 2.4GHz, 6 dBi for 5GHz	3 dBi for 2.4GHz, 4 dBi for 5GHz	3 dBi for 2.4GHz, 4 dBi for 5GHz
	Power-over-Ethernet	• (proprietary)	• (802.3at)	• (802.3af)	• (802.3at)	• (802.3at)	• (802.3at)
	Wired interface	2 x Gigabit Ethernet	1 x Gigabit Ethernet	1 x Gigabit Ethernet	2 x Gigabit Ethernet	2 x Gigabit Ethernet	1 x Gigabit Ethernet, 1 x 2.5G Ethernet
	Link Aggregation				LAG	LACP	LACP
	Console port			•	•	•	•
	Type of housing	Plastic	Plastic	Plastic	Plastic	Plastic	Plastic
	Outdoor housing (IP rating)	• (IP66)	• (IP66)				
Plenum rated (UL-2043)			•	•	• (DWL-8620AP only)	•	
WIRELESS MODES	Access point (AP)	•	•	•	•	•	•
	WDS with AP	•	•	•	•	•	•
	WDS / bridge	•	•	•	•	•	•
WIRELESS FEATURES	Maximum number of SSIDs	8	8	32 (16 per radio)	32 (16 per radio)	32 (16 per radio)	32 (16 per radio)
	Auto channel selection	•	•	•	•	•	•
	WMM-PS/802.11e (U-APSD), AP load balance	•	•	•	•	•	•
	Wi-Fi scheduler	•	•	•	•	•	•
	L2 roaming			•	•	•	•
SECURITY	WPA3 - 128/192-bit Personal/Enterprise wireless encryption				•	•	•
	WEP 64/128bit, WPA/WPA2-Personal/Enterprise, TKIP/AES encryption	• (no WEP encryption)	• (no WEP encryption)	•	• (no WEP encryption)	• (no WEP encryption)	• (no WEP encryption)
	WPA/WPA2-PSK over WDS			•	•	•	•
	WLAN partition	•	•	•	•	•	•
	SSID broadcast disable	•	•	•	•	•	•
	Rogue AP detection, station isolation	• (no Rogue AP dect.)	• (no Rogue AP dect.)	•	•	•	•
	MAC address filtering, 802.1X authentication	•	•	•	•	•	•
WIRELESS CONTROLLER MANAGED FEATURES	Rogue AP mitigation			•	•	•	•
	L2/L3 fast roaming			•	•	•	•
	WIDS/WIPS			•	•	•	•
	Auto-channel, auto-RF management			•	•	•	•
	AP load balance			•	•	•	•
	Captive portal			•	•	•	•
	View neighbour AP information			•	•	•	•
	Supported D-Link Wireless Controller			DWC-1000, DWC-2000	DWC-1000, DWC-2000	DWC-1000, DWC-2000	DWC-1000, DWC-2000
	WEB	•	•	•	•	•	•
	SNMP (v1, V2c, v3)			•	•	•	•
CLI, Telnet, SSH			•	•	•	•	
Syslog	•	•	•	•	•	•	

		DWC-2000	
WLAN MANAGEMENT	Number of Gigabit ports	4 x Combo LAN	
	Type of controller	Hardware-based	
	Standard number of APs	64 (256 with cluster of 4 x DWC-2000)	
	Maximum number of APs through optional license upgrade	256 (1024 with cluster of 4 x DWC-2000)	
	Supported AP	Puntos de acceso profesionales de la gama DWL	
	Supported switches		
	Supported SDN Gateway / VPN Firewall		
	Zero touch provisioning for AP deployment		
	AP geolocation		
	Controller redundancy	•	
	Advanced traffic report and data analysis		
	Visualised topology	•	
	NAT pass through (AP)		
	Multi-tenancy		
AUTHENTICATION	WIDS	•	
	IPv6	•	
	Captive portal	•	
	Authentication method	802.1x, RADIUS, Local DB, LDAP, POP3, Wi-Fi passcode, AD Local DB, external RADIUS, NAP	
	Payment gateway (Paypal, WorldPay, SecureNet, Authorise.Net)	•	
	Web redirect	•	
	RF	Auto transmit power control	•
		Self-healing around failed APs	•
		Multiple SSID per Radio (AP)	16
	WIRELESS FEATURE	Band steering	•
Seamless roaming		•	
L2 roaming		•	
Bandwidth optimisation		• (QoS)	
MANAGEMENT	Load balancing	•	
	Web-based user interface	HTTPS	
	Firmware/module online check		
	Remote management	•	
	Cloud hosting		
	Firmware/configuration upgrade by scheduling		
	NETWORKING	WAN fail-over	
		Link aggregation	• (LACP)
		Layer 3 routing (table size)	• (2048)
		Firewall	
VLAN		•	
Support VPN gateway			
Build in DHCP server		•	
OTHERS	Optional license upgrades	DWC-2000-AP32-LIC DWC-2000-AP64-LIC DWC-2000-AP128-LIC	

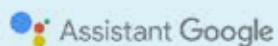
mydlink



The smart way to protect and control your home

Keep an eye on your home while you're away, save money by controlling your power budget, set your lights to turn on when it gets dark.
Your home, only smarter.

- 1 Smart scheduling and automation
- 2 Cloud recording allows you to record video clips to off-site cloud storage
- 3 One-tap feature allows you to easily control multiple devices and bundle multiple actions into scenarios
- 4 Works with Amazon Alexa and Google Assistant voice control
- 5 Quick and easy setup with integrated Bluetooth



Protect Your Home with Smart AI-Based Detection



The next-generation mydlink Wi-Fi cameras integrate people detection. On certain models, this is enhanced with AI, advanced image analysis for detecting priority areas, crossings, etc.



The **mydlink app** allows for simultaneous viewing of multiple cameras, and access to live streaming is instantaneous.

It integrates geolocation to activate privacy mode when approaching the house and deactivate it when leaving.

Detection of motion, sound, or a person triggers a notification with a photo on mobile phones and smartwatches, and initiates recording in the Cloud.



	MODEL	DCS-6100LHV2	DCS-6501LH	DCS-8350LH	DCS-8526LH	DCS-8620LH
HARDWARE	Indoor/Outdoor	Indoor	Indoor	Indoor	Indoor	Outdoor (IP65)
	Maximum Video Resolution	1080p (1920 x 1080)	1296p (2304 x 1296)	1440p (2560 x 1440)	1440p (2560 x 1440)	1440p (2560 x 1440)
	Night Vision (Range)	● (Up to 5 m)	● (Up to 8 m)	● (Up to 7 m)	● (Up to 7 m)	● (Up to 7 m)
	Field Of View (H/V/D)	99° / 57° / 120°	89° / 48° / 107°	108° / 58° / 127°	102.5° / 55.2° / 122°	108° / 58° / 127°
	Colour Night Vision				●	●
	Motorised Pan/Tilt		● (pan and tilt)		● (pan and tilt)	
	Pan Range		-175° to +180°		-170° to +170°	
	Tilt Range		-90° to +90°		-10° to +90°	
	Preset positions		●		●	
	Auto Motion Tracking		●		●	
	Panorama Position Selection		●		●	
	2-Way Audio	●	●	●	●	●
	Built-in Microphone	●	●	●	●	●
	Built-in Speaker	●	●	●	●	●
	Built-in Siren					●
	Wireless	802.11g/n	802.11b/g/n/ax	Dual-band 802.11n/ac	Dual-band 802.11n/ac	Dual-band 802.11n/ac
	Ethernet Port				●	
Maximum microSD card	256 GB	128 GB	256 GB	256 GB	256 GB	
FEATURES	Sound / Motion Detection	●	●	●	●	●
	Glass Break Detection					●
	Extra Motion Features		Auto Motion Tracking / Continuous Recording to microSD	AI-Based Person Detection / CO/Smoke Alarm Detection	Auto Motion Tracking / Person Detection / CO/Smoke Alarm Detection / Continuous Recording to microSD	AI-Based Person Detection / Vehicle Detection / Glass Break Sound Detection / Continuous Recording to microSD
	Video Recording	Cloud / microSD / App	Cloud / microSD / App	Cloud / microSD / App	Cloud / microSD / App	Cloud / microSD / App
	Amazon Alexa Support	●	●	●	●	●
	Google Assistant Support	●	●	●	●	●
	Bluetooth Setup		●	●	●	●
ONVIF Support			●	●	●	



AQUILA PRO AI

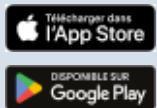


AQUILA PRO AI



Design and technology go hand in hand

AQUILA PRO AI features an advanced design to seamlessly blend into environments where modern aesthetics are essential. From a technological standpoint, it incorporates the latest Wi-Fi 6 technology with 160 MHz channels, as well as AI-powered optimisation for Mesh networking and traffic prioritisation.



AQUILA PRO AI App

Easy installation from your mobile phone. Advanced network management with AI, smart prioritisation, and more. Parental control to restrict access based on time and content.

MODEL		M30 / M30-2	M60 / M60-2
GENERAL	Coverage area	Up to 260 m ² / Up to 465 m ²	Up to 280 m ² / Up to 510 m ²
	Number of units in pack	1 / 2	1
	D-Link Wi-Fi Mesh	●	●
WIRELESS	Wireless standard	Wi-Fi 6 AX3000	Wi-Fi 6 AX6000
	Wireless speed	574 Mbps 2.4 GHz 2402 Mbps 5 GHz	574 Mbps 2.4 GHz 2402 Mbps 5 GHz
	Dual-band	●	●
	Smart Steering (automatic selection of optimal Wi-Fi band)	●	●
	Smart Roaming	●	●
	Multi-User MIMO (MU-MIMO)	●	●
	Wireless Security	WPA2/WPA3	WPA2/WPA3
BACKHAUL	Dedicated Backhaul	● (Ethernet)	● (Ethernet)
	Backhaul technology	Gigabit Ethernet	Gigabit Ethernet
WIRED	LAN speed	Gigabit Ethernet	Gigabit Ethernet
	Number of WAN ports / unit	1	1
	Number of LAN ports / unit	4	4



Smart Coverage

Mesh network with AI for real-time analysis of available channels and connected devices.



Maximum Speed

Wi-Fi 6 speeds of up to 6,000 Mb/s, plus four LAN ports for maximum wired connectivity.



Compatibility

They can be used as routers, repeaters, or access points alongside any operator's modem.

4G/5G



4G/5G Mobile Internet

Our 4G/5G solutions are perfect for deploying networks in areas where broadband is unavailable or for accessing the internet without relying on mobile phone tethering, which quickly drains battery life and offers limited performance compared to a dedicated router. Mobile hotspots feature high-performance batteries and a compact design for easy portability. They support SIM cards from all operators and are Plug & Play. For business environments, high-speed networks can be deployed using 5G with the D-Link DWP-1010 outdoor router.

4G/5G Portable Hotspots



Model	DWR-932	DWR-933	F518
Wireless standard	Wireless N300	Wireless AC1200	Wireless AX1800
Wireless speed	300 Mbps 2.4 GHz	300 Mbps 2.4 GHz 867 Mbps 5 GHz	574 Mbps 2.4 GHz 1201 Mbps 5 GHz
Dual-band		•	•
MU-MIMO			•
Wi-Fi Antennas	Internal	Internal	Internal
4G/5G Antennas	Internal	Internal	Internal
Type of WAN	4G LTE Cat. 4 (D/L: 150 Mbps, U/L: 50 Mbps)	4G LTE Cat. 6 (D/L: 300 Mbps, U/L: 50 Mbps)	5G NR/LTE
Integrated SIM card slot	•	•	•
USB port	micro-USB x 1	micro-USB x 1	USB type C x 1
microSD crd slot		•	•
Battery powered	•	•	•
Display		OLED	

4G USB Adapter



Model	DWM-222/R
Connection type	4G LTE Cat. 4
Connection 4G Speed	D/L: 150 Mbps U/L: 50 Mbps
Antennas	Internal
Integrated SIM card slot	Yes
Interface type	USB 2.0

5G USB Adapter



Model	D501
Connection type	5G NR
Connection Speed	Up to 3.4 Gbps
Antennas	4x internal
Integrated SIM card slot	Nano SIM (4FF)
Interface type	USB Type-C

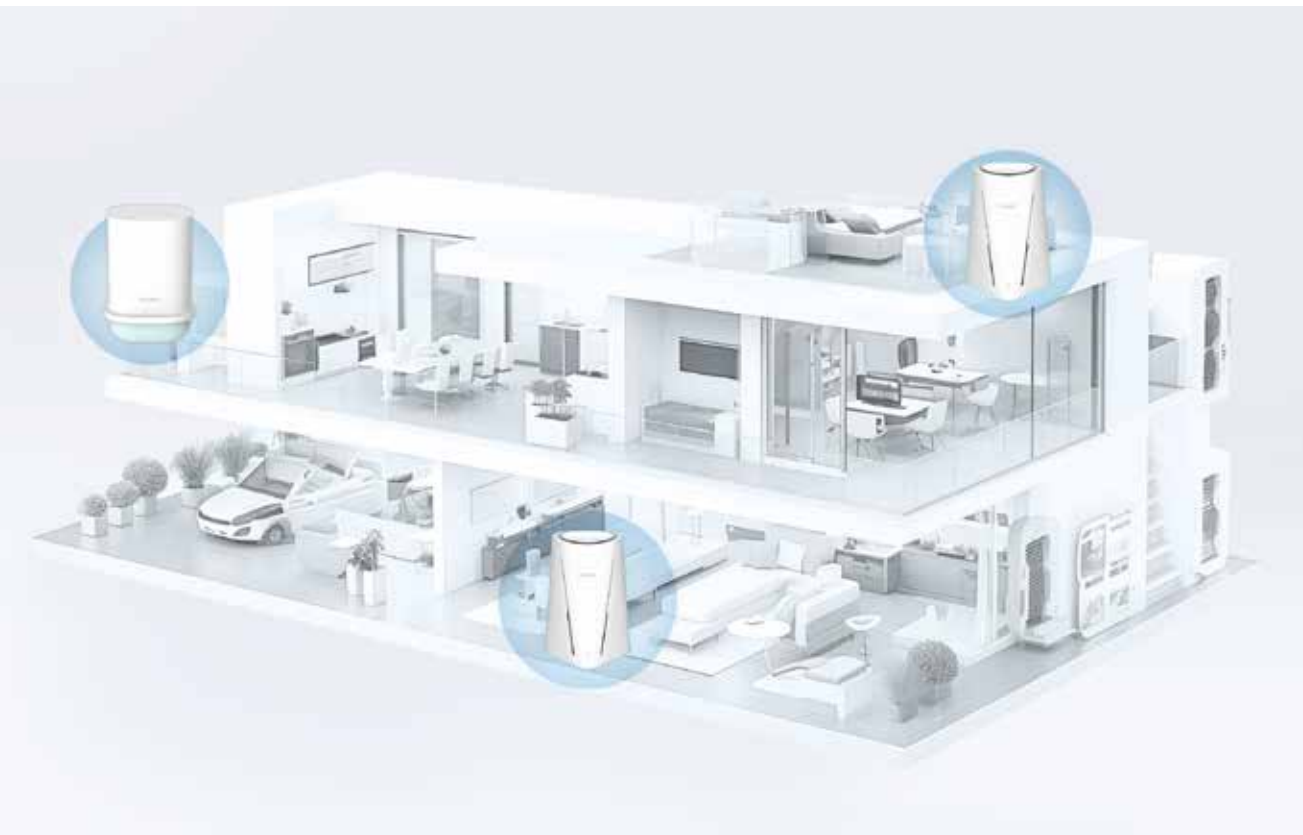


5G



5G technology with multi-gigabit speeds of up to 4 Gb/s.

5G also provides lower latency, strong security, and great deployment flexibility.



Model	G530	DWP-1010	DWP-1010/KT
Product name	5G NR AX3000 Wi-Fi 6 Router	5G/LTE Outdoor CPE	5G/LTE Outdoor CPE
Indoor/outdoor (IP-rating)	Indoor	Outdoor (IP67)	Indoor + Outdoor
Mount	Desktop	Wall and pole	Desktop, wall and pole
Wireless standard	802.11ax	(For installation and maintenance only)	(For installation and maintenance only)
Wireless speed	574 Mbps 2.4 GHz 2402 Mbps 5 GHz		
Dual-band	•		
MU-MIMO	•		
Guest Wi-Fi network	•		
Wi-Fi Antennas	Internal	Internal	Internal
WPA3	•		
4G/5G Antennas	Internal	Internal	Internal
Type of WAN	1 Gigabit Ethernet WAN port 5G NR Sub 6 GHz: n1/3/20/28/77/78 (D/L: 4 Gbps, U/L: 550 Mbps)	5G NR Sub 6 GHz: n1/3/20/28/77/78 (D/L: 4 Gbps, U/L: 620 Mbps)	5G NR Sub 6GHz: n1/3/20/28/77/78 (D/L: 4Gbps, U/L: 620 Mbps)
4G/LTE fallback	•	•	☞
Integrated SIM card slot	•	•	☞
Wired LAN speed	Gigabit	2.5 Gigabit	2.5 Gigabit
Number of LAN ports	1	1	1
PoE*		802.3at	802.3at
Failover Internet	•		

*DWP-1010 includes a PoE injector.

WI-FI EXTENDERS AND ADAPTERS

Wi-Fi Extenders



EAGLEPRO AI



AQUILA PRO AI



Model	DAP-1325	E15	DAP-1620	E30
Wireless standard	Wireless N300	Wi-Fi 6 Wireless AX1500	Wave 2 Wireless AC1300	Wi-Fi 6 Wireless AX3000
Wireless speed	300 Mbps 2.4 GHz	300 Mbps 2.4 GHz 1201 Mbps 5 GHz	400 Mbps 2.4 GHz 867 Mbps 5 GHz	574 Mbps 2.4 GHz 2403 Mbps 5 GHz
Dual-band		•	•	•
D-Link Wi-Fi Mesh support				
Operational modes	<ul style="list-style-type: none"> • Wi-Fi Extender • Wi-Fi client 	<ul style="list-style-type: none"> • Extender 	<ul style="list-style-type: none"> • Wi-Fi Extender • Wi-Fi client 	<ul style="list-style-type: none"> • Extender • Access point
WPA3 Wi-Fi encryption support				
Antennas	External	•	Foldable external	•
Wired LAN speed	Fast Ethernet	Gigabit Ethernet	Gigabit Ethernet	Gigabit Ethernet
Number of LAN ports	1	1	1	

Wi-Fi Adapters



Model	AN3U	DWA-131	DWA-172	AC13U	DWA-181	DWA-182	DWA-582	AX9U	AX18U	DWA-X1850
Connection type	Wi-Fi 4 N300"	Wi-Fi 4 N300"	Wi-Fi 5 AC600	Wi-Fi 5 AC1300"	Wi-Fi 5 Wave 2 AC1300	Wi-Fi 5 Wave 2 AC1300	Wi-Fi 5 AC1200	Wi-Fi 6 AX900"	Wi-Fi 6 AX1800	Wi-Fi 6 AX1800
Connection speed	300 Mbps 2.4 GHz	300 Mbps 2.4 GHz	150 Mbps 2.4 GHz 433 Mbps 5 GHz	400 Mbps 2.4 GHz 867 Mbps 5 GHz	400 Mbps 2.4 GHz 867 Mbps 5 GHz	400 Mbps 2.4 GHz 867 Mbps 5 GHz	300 Mbps 2.4 GHz 867 Mbps 5 GHz	286 Mbps 2.4 GHz 600 Mbps 5 GHz	574 Mbps 2.4 GHz 1201 Mbps 5 GHz	574 Mbps 2.4 GHz 1200 Mbps 5 GHz
Dual-band			Yes	Yes	Yes	Yes	Yes	Yes	Yes	Yes
Antennas	Internal	Internal	High-gain external	Internal	Internal	Internal	High-gain external	Internal	Foldable	Internal & external
WPS one button connection		Yes	Yes		Yes	Yes			Yes	
WPA support	WPA, WPA2 and WPA3	WPA, WPA2 and WPA3	WPA, WPA2 and WPA3	WPA, WPA2 and WPA3	WPA, WPA2 and WPA3	WPA, WPA2 and WPA3	WPA and WPA2	WPA, WPA2 and WPA3	WPA2 and WPA3	WPA2 and WPA3
Interface type	USB 2.0	USB 2.0	USB 2.0	USB 2.0	USB 2.0	USB 3.0	PCIe	USB 2.0	USB 3.0	USB 3.0

ENTERPRISE ROUTER

VPN/Firewall
Load balancing
Business Routers



MODEL	DSR-250V2
Wireless standard	
Wireless speed	
Dual-band	
MIMO	
Guest Wi-Fi network	
Captive Portal	
Wi-Fi Antennas	
Type of WAN	1 x Gigabit Ethernet
Number of LAN ports	3 + 1 (WAN/LAN) x Gigabit Ethernet
Console port	RJ-45
Fail-safe Internet	•
Outbound load balancing	•
USB port	USB 2.0 x 2
USB file sharing	•
VPN protocols	IPSec, PPTP/L2TP, GRE, SSL, OpenVPN
VPN encryption	DES, 3DES, AES, Blowfish, Twofish, CAST128
VPN throughput	200 Mbps
Firewall throughput	950 Mbps
L3 routing	RIP v1/v2, OSPF, OSPFv3
Authentication	Internal User Database, Radius, POP3, LDAP, AD, NT Domain
Bandwidth control	•
Command line, SNMP	•



4G/5G / WI-FI ROUTERS



Model	G403	DWR-960	G415	G416	G530	G572	R15/E	R32/E	R95
4G LTE/5G	4G LTE Cat. 4	4G LTE Cat. 7	4G LTE Cat. 4	4G LTE Cat. 6	5G NR Sub 6 GHz	5G NR Sub 6 GHz			
Type of WAN	Fast Ethernet, (D/L: 150 Mbps, U/L: 50 Mbps)	Gigabit Ethernet, (D/L: 300 Mbps, U/L: 100 Mbps)	Gigabit Ethernet, (D/L: 150 Mbps, U/L: 50 Mbps)	Gigabit Ethernet, (D/L: 300 Mbps, U/L: 50 Mbps)	1 Gigabit Ethernet WAN port n1/3/20/28/77/78 (D/ : 3.4 Gbps, U/L: 550 Mbps)	2.5 Gigabit Ethernet WAN port	Gigabit Ethernet WAN port	Gigabit Ethernet WAN port	2.5 Gigabit Ethernet WAN port
Wireless standard	Wireless N300	Wireless AC1200	Wireless AX1500	Wireless AX1500	802.11ax	Wi-Fi 7 Wireless BE7200	Wi-Fi 6 Wireless AX1500	Wi-Fi 6 Wireless AX3200	Wi-Fi 7 Wireless BE7200
Wireless speed	300 Mbps 2.4 GHz	300 Mbps 2.4 GHz 867 Mbps 5 GHz	300 Mbps 2.4 GHz 1201 Mbps 5 GHz	300 Mbps 2.4 GHz 1201 Mbps 5 GHz	600 Mbps 2.4 GHz 2400 Mbps 5 GHz	1376 Mbps 2.4 GHz 5764 Mbps 5 GHz	300 Mbps 2.4 GHz 1201 Mbps 5 GHz	800 Mbps 2.4 GHz 2402 Mbps 5 GHz	688 Mbps 2.4 GHz 2882 Mbps 5 GHz 5764 Mbps 6 GHz
Dual-band		•	•	•	•	•	•	•	•
MIMO		•	• (MU-MIMO)	• (MU-MIMO)	•	•	•	•	•
OFDMA			•	•			•	•	•
Wireless security	WPA2/WPA3	WPA/WPA2	WPA2/WPA3	WPA2/WPA3		•	WPA2/WPA3	WPA2/WPA3	WPA2/WPA3
Wi-Fi Antennas	Fixed external	Internal	Internal	Internal	Internal	Internal	•	•	Internal
4G/5G Antennas	Fixed external	Detachable external	Detachable external	Detachable external	Internal	Internal			•
Integrated SIM card slot	•	•	•	•	•	•			
Wired LAN speed	Fast Ethernet	Gigabit	Gigabit	Gigabit	Gigabit	Gigabit	Gigabit	Gigabit	Gigabit
Number of LAN ports	4	1 + 1 (WAN/LAN)	3	3	1	4	3	4	3
Quick VPN			•	•			•	•	•
Static routes	•		•	•			•	•	•
Fail-safe Internet	•	•	•	•					
USB port					USB 2.0 x 1	1	1	1	1



USB HUBS AND DOCKING STATIONS



Pocket Docking Station

D-Link's range of USB hubs and docking stations enhances connectivity for desktop and laptop PCs and Macs, as well as smartphones and tablets (iOS/Android) at both the office and work environments. Simply plug them into an available USB-C port (some models also come with a USB adapter) to enjoy additional USB ports, a LAN Ethernet port for wired internet connection, HDMI outputs, and SD/MicroSD card slots.

Plug & Play operation and a compact design with a metallic finish for easy transport.



Model	DUB-M420	DUB-M520	DUB-M530	DUB-M810	DUB-V310	DUB-2334	DUP-501	DUP-A01
Number of ports	4	5	5	8	3	5	5	10
USB 3.0	2	2	2	3		3	1	4
USB-C with power	1 (up to 60W)	1 (up to 60W)		1 (up to 100W)		1 (up to 60W)	1 (up to 100W)	1 (up to 100W)
Gigabit Ethernet		1		1		1	1	1
2.5 Gigabit Ethernet								
Display output	HDMI x 1	HDMI x 1	HDMI x 1	HDMI x 1	HDMI x 1, DPx1, VGAx1		HDMI x1, DPx2	HDMI 2.0x2
Maximum Resolution	Up to 4K	Up to 4K	Up to 4K	Up to 4K	Up to 4K ¹		Up to 4k	Up to 4K
Card reader			SD x 1 microSD x 1	SD x 1 microSD x 1				SDx1 MicroSDx1
Compatible with	Computer with USB-C or Thunderbolt 3 port(s) running Microsoft Windows, Mac OS or Chrome OS Smartphones with USB-C port running Android OS ²							



Model	DUB-H4	DUB-H7	DUB-1312	DUB-1340
Number of ports	4	7	1	4
USB 3.0			1	4
Standards	OHCI / UHCI / EHCI / USB 2.0 / USB 1.1		OHCI / EHCI / USB 3.0 / USB 2.0 / USB 1.1/IEEE 802.3 et 802.3U	OHCI / UHCI / USB 3.0 / USB 2.0 / USB 1.1
Interfaces Downstream Port	7 USB 2.0 Type-A (Female)	4 USB 2.0 Type-A (Female)	USB Type A	4 USB 3.0 Type-A (Female)
Interfaces Upstream Port	1 USB 2.0 Mini-B (Female)	1 USB 2.0 Type-C (Female)	RJ-45 Ethernet Port (10/100/1000 Mbps)	1 USB 3.0 Micro-B (Female)
Power Input	Bus powered from USB ports : 5V / 500mA	Bus powered from USB ports : 5V / 1.5 A DC	Bus Powered 5V DC / 500mA	Bus powered from USB 3.0 ports : 5V / 900 mA
Compatible with	Windows 10/8/7/Vista/XP and Mac OS X 10.4 or above		Windows 10/8 and Mac OS 10.9 or above	Windows 10/8/7/Vista/XP and Mac OS X 10.4 or above
Card reader				
Compatible with	Microsoft Windows 10/8/7/Vista/XP and Mac OS X 10.4 or above		Microsoft Windows 8/7/Vista/XP SP3, MAC OS 10.6 to 10.8 and Linux kernel 2.6 14x or above	Microsoft Windows 10/8/Win 8 RT/Vita/XP, Mac OS and Linux

PARTNER PROGRAMME



D-Link’s success as a provider of network solutions has been built on its relationship and unrivalled commitment to its partners. Our **Value In Partnership+ Programme** not only builds on these relationships but also takes them to the next level by offering networking solutions, training and processes that increase your ability to be profitable with us, grow and diversify your business and provide excellent value to your customers.

Partner Benefits Summary*

	REGISTERED D-Link	BRONZE D-Link	SILVER D-Link	GOLD D-Link
Access to online D-Link Partner Portal	Yes	Yes	Yes	Yes
VIP+ Newsletter	Yes	Yes	Yes	Yes
Free Online Certification Training and Resources	Yes	Yes	Yes	Yes
Webinars and Workshops	Yes	Yes	Yes	Yes
Online Product Tools	Yes	Yes	Yes	Yes
Sales Support Material	Yes	Yes	Yes	Yes
Exclusive Monthly Promotions	Yes	Yes	Yes	Yes
Deal Registration		Yes	Yes	Yes
Eligible for the Demo Purchase Programme		Yes	Yes	Yes
Priority Tech Support		Yes	Yes	Yes
Campaigns Centre for Lead Generation			Yes	Yes
Dedicated Account Management			Yes	Yes
Eligible for Sales Leads			Yes	Yes
Presence on D-Link Website (Where to Buy Section)			Yes	Yes
Invitation to Partner Roundtables				Yes

* Benefits could vary according to the country, please contact your local D-Link representative for more information.

Certification and Training

The D-Link Certification Programme is a **free online, on-demand** training programme that provides sales and technical coursework and exams focused on specific technologies: Wireless, Storage, Security, Switching and IP Surveillance. It’s an opportunity for individuals in your organisation to become **D-Link Specialists**.



Designed for **sales professionals**, DSS courses focus on D-Link’s market strategy, value proposition, product positioning, identifying opportunities and understanding customer needs.



Designed for **pre-sales technical professionals** to ensure that they are knowledgeable about networking concepts and the features, functionality and positioning of D-Link products.

Present your projects professionally



Wi-Fi Planner Pro

A tool with an intelligent algorithm that visually represents the RF signal coverage for D-Link Wi-Fi access points. You can use real floor plans, add obstacles, and specify the material of walls for the coverage map.

It allows for exporting the entire mapping report and proposed access points for the project in PDF format.

Visit vipplus.dlink.com to join today!

D-Link is a registered trademark of D-Link Corporation and its foreign subsidiaries. Nuclias Cloud, Nuclias Connect, EAGLE PRO AI, AQUILA PRO, mydlink, Value in Partnership+, D-Link Green, D-Link Assist, and other registered trademarks of D-Link not listed here are trademarks or registered trademarks of D-Link Corporation and/or D-Link Europe Ltd in Europe and/or other countries. Other brands and product names may be registered trademarks and the property of their respective holders. All rights reserved. Copyright ©2025 D-Link Europe Limited.

Disclaimer

Every reasonable effort has been made to ensure that the data in this product guide is accurate at the time of printing and remains valid except for any accidental errors or omissions. Specifications may change without notice.

www.dlink.com

D-Link[®]