

Product Highlights

Robust Design

High EMC endurance, fanless design, and a wide operating temperature range combined with IP40 housing to withstand harsh operating environments.

Industrial Deployment

Compact, plug-and-play form factor design that supports DIN rail mounting to allow for flexible and swift deployment.

Flexible Availability

8 Gigabit Ethernet ports and 2 SFP uplink ports for long distance connections.



DIS-100G-10

Gigabit Industrial Unmanaged Switch

Key Features

Adaptable Application

- SFP ports for long distance connections
- Plug-and-play installation

Robust and High-Redundancy Design

- Fanless, passive cooling design
- Industrial grade operating temperature (-40~75°C)
- High EMS endurance
- Durable IP40-rated housing
- Dual power input for redundant power supplies
- Built-in 6 KV surge protection on copper ports

Advanced Features

- 9K jumbo frames
- IEEE 802.3az Energy Efficient Ethernet
- Power saving by link status

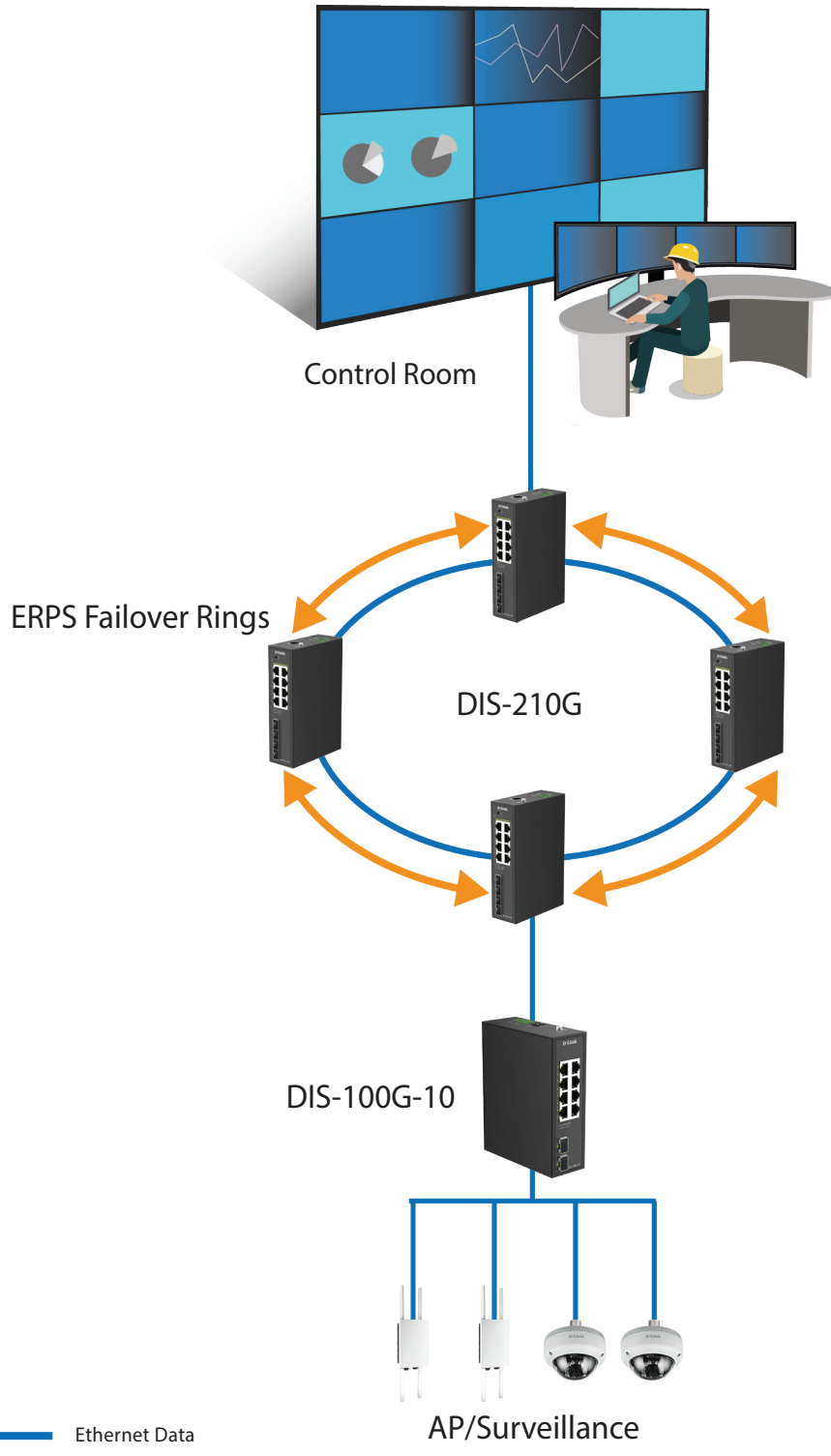
The DIS-100G-10 Gigabit Industrial Unmanaged Switch features a robust design, making it ideal for deployment in industrial and outdoor cabinet surveillance settings and capable of withstanding the harshest environments. In addition, the DIS-100G-10 is plug-and-play, allowing for effortless and swift deployment.

Durable, Reliable, and Efficient

The DIS-100G-10 switch is housed in a highly resistant IP40-rated metal casing to protect the switch from harsh environmental conditions. High electromagnetic susceptibility (EMS) protects the DIS-100G-10 from undesirable effects when operating in environments with strong electromagnetic interference. Meanwhile, the fanless design extends the life of the DIS-100G-10 while also enabling it to operate in a wide temperature range from -40 °C up to 75 °C. With DIN rail mounting capability, the DIS-100G-10 can fit seamlessly into your industrial equipment infrastructure. In addition, the DIS-100G-10 supports dual power input, which allows for a redundant power supply configuration to make sure the switch continues to operate in the event of a primary power supply failure.

Green Ethernet Technology

The DIS-100G-10 features green technology; IEEE 802.3az Energy-Efficient Ethernet (EEE). Energy-Efficient Ethernet reduces the power consumption of the switch when network utilization is low, effectively lowering the cost of ownership during periods of inactivity.



Technical Specifications

Model Number	DIS-100G-10
Hardware Version	A1
Interfaces	<ul style="list-style-type: none">• 8 x GE ports• 2 x 1G SFP ports
Port Functions	<ul style="list-style-type: none">• IEEE 802.3 for Ethernet• IEEE 802.3u for Fast Ethernet• IEEE 802.3z for Gigabit fiber• IEEE 802.3az Energy-Efficient Ethernet (EEE)
Media Interface Exchange	Auto MDI/MDIX adjustment for all twisted-pair ports

Performance

Switching Capacity	20 Gbps
Transmission Method	Store-and-forward
MAC Address Table	8K
Maximum 64 Byte Packet Forwarding Rate	14.88 Mpps
Packet Buffer Memory	4.1 MB
Flash Memory	16 MB
DRAM Size	128 MB

LEDs

Power (per device)	√
Link/Active/Speed (per RJ-45 port)	√
Link/Active/Speed (per SFP port)	√

Physical

Power Input	12 to 55 VDC terminal block dual input
Maximum Power Consumption	Maximum: 6.99 W
Standby Power Consumption	Maximum: 2.85 W
Heat Dissipation	21.5 BTU/hr
MTBF	> 200,000 hours
Operating Temperature	-40 to 75°C (-40 to 167°F)
Storage Temperature	-40 to 85°C (-40 to 185°C)
Operating Humidity	5% to 95% relative humidity
Storage Humidity	5% to 95% relative humidity
Material	IP40-rated metal casing
Installation	DIN rail
Dimensions (L x W x H)	138 x 108 x 44 mm (5.43 x 4.25 x 1.73 in)
Weight	0.62 kg (1.36 lbs)

Certifications

Safety	cUL, CB, CE, BSMI
EMI	CE Class A, VCCI Class A, FCC Class A, IC, BSMI, RCM

Order Information

DIS-100G-10	8 Ports GE + 2 Ports 1G SFP Industrial Unmanaged Switch, DIN
-------------	--

Optional SFP Transceivers

DIS-S301SX	1000BASE-SX, multi-mode, 550 m, -40 to 85 °C operating temperature
DIS-S302SX	1000BASE-SX, multi-mode, 2 km, -40 to 85 °C operating temperature
DIS-S310LX	1000BASE-LX, single-mode, 10 km, -40 to 85 °C operating temperature
DIS-S330EX	1000BASE-EX, single-mode, 30 km, -40 to 85 °C operating temperature
DIS-S350LHX	1000BASE-LHX, single-mode, 50 km, -40 to 85 °C operating temperature
DIS-S380ZX	1000BASE-ZX, single-mode, 80 km, -40 to 85 °C operating temperature